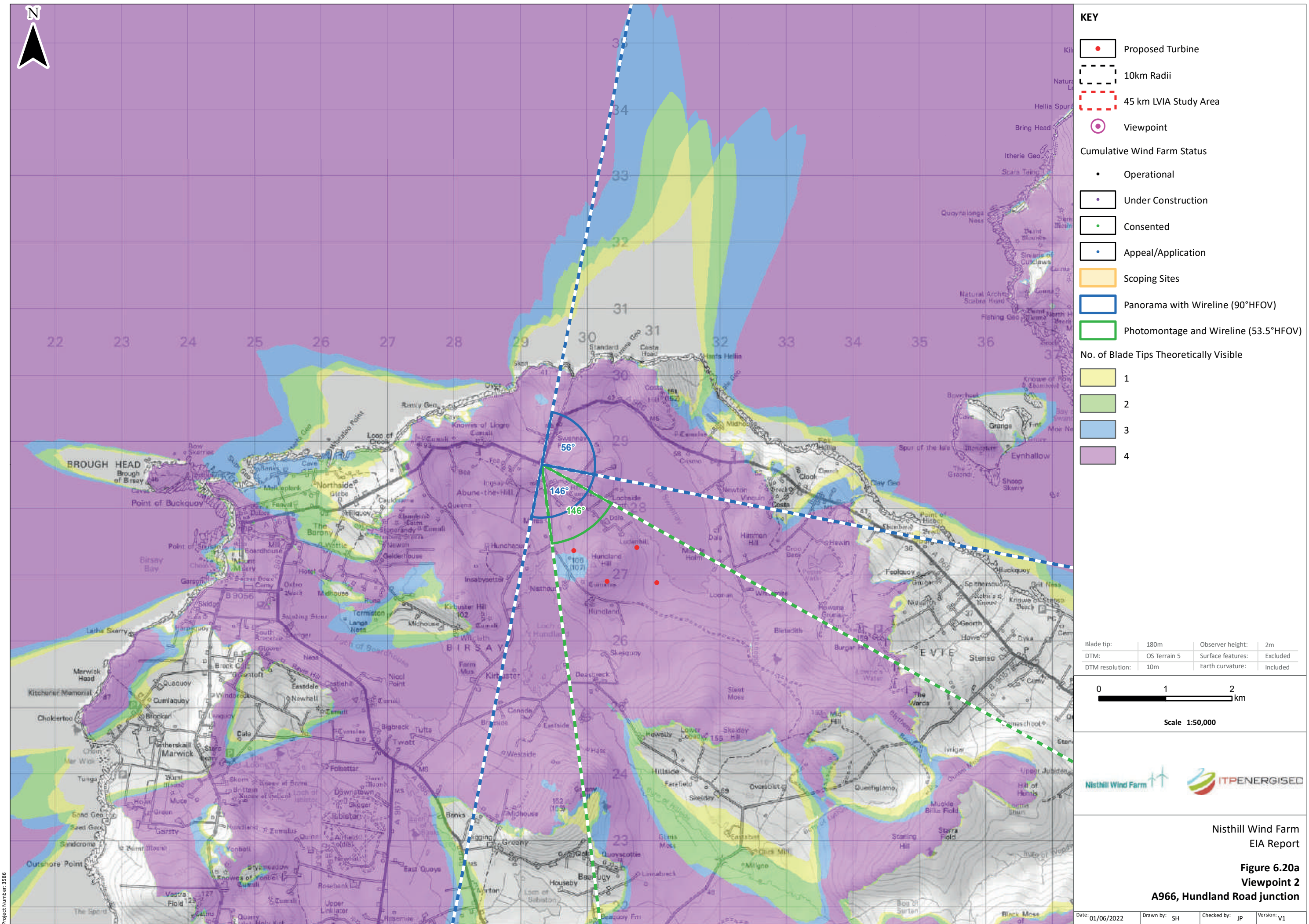


Scale: 1:350,000



Scale: 1:50,000

KEY

- Proposed Turbine
- 10km Radii
- 45 km LVIA Study Area
- Viewpoint

Cumulative Wind Farm Status

- Operational
- Under Construction
- Consented
- Appeal/Application

Scoping Sites

- Panorama with Wireline (90°HFOV)
- Photomontage and Wireline (53.5°HFOV)

No. of Blade Tips Theoretically Visible

- 1
- 2
- 3
- 4

Blade tip:	180m	Observer height:	2m
DTM:	OS Terrain 5	Surface features:	Excluded
DTM resolution:	10m	Earth curvature:	Included

0 1 2 km

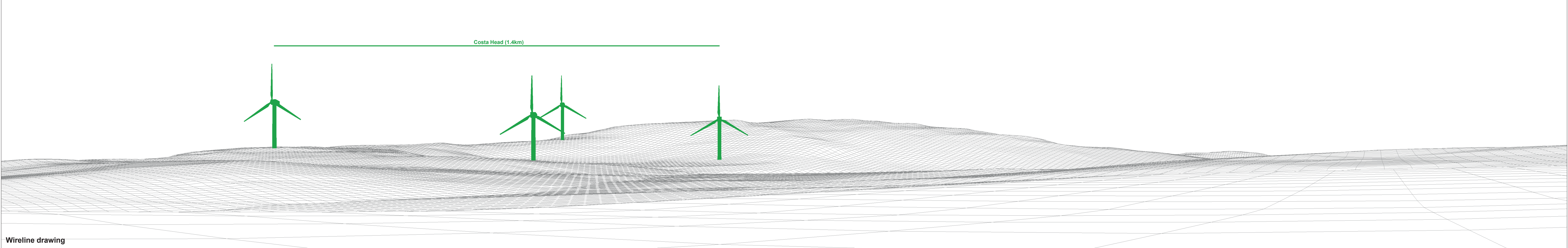
Scale 1:50,000

Nisthill Wind Farm ITPENERGISED

Nisthill Wind Farm EIA Report

Figure 6.20a
Viewpoint 2
A966, Hundland Road junction

Date: 01/06/2022 Drawn by: SH Checked by: JP Version: V1

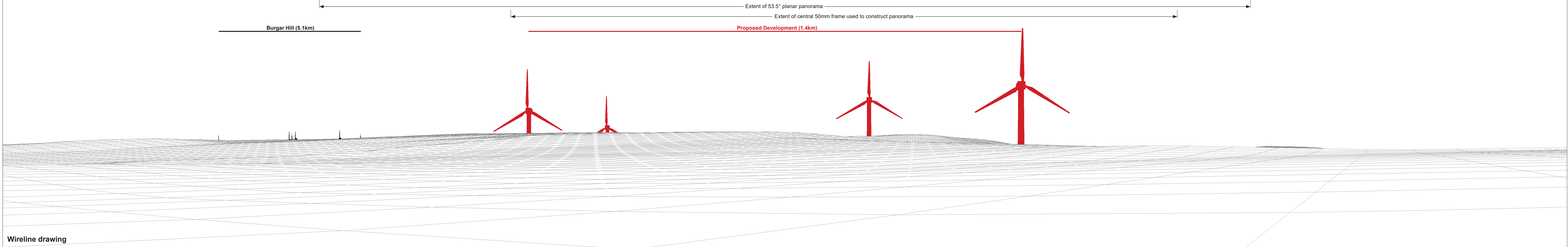


OS reference: 329328 E 1029601 N
 Eye level: 51.4 m AOD
 Direction of view: 56°
 Nearest turbine: 1.384 km

Horizontal field of view: 90° (cylindrical projection)
 Principal distance: 522 mm

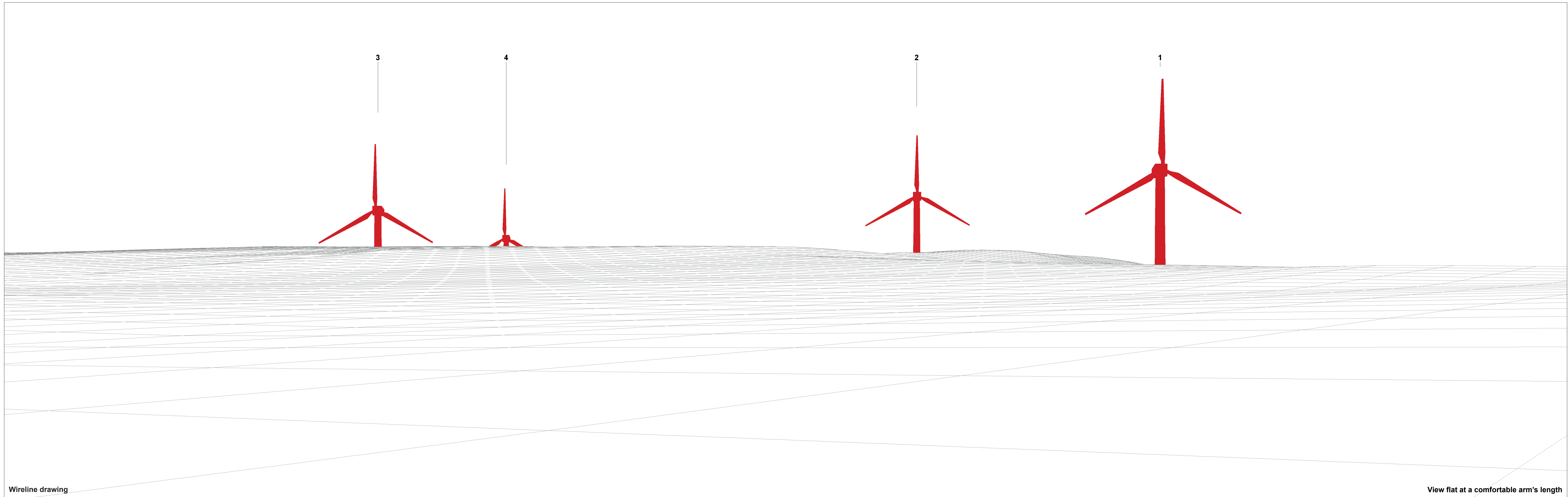
Camera: Canon EOS 6D Mark II
 Lens: EF50mm f/1.4 USM
 Camera height: 1.5 m AGL
 Date and time: 01/03/2022, 16:14

Figure: 6.20b
 Viewpoint 2: A966, Hundland Road junction



OS reference:	329328 E 1029601 N	Horizontal field of view:	90° (cylindrical projection)	Camera:	Canon EOS 6D Mark II
Eye level:	51.4 m AOD	Principal distance	522 mm	Lens:	EF50mm f/1.4 USM
Direction of view:	146°			Camera height:	1.5 m AGL
Nearest turbine:	1.384 km			Date and time:	01/03/2022, 16:14

Figure: 6.20c
Viewpoint 2: A966, Hundland Road junction



Wireline drawing

View flat at a comfortable arm's length

OS reference: 329328 E 1029601 N
Eye level: 51.4 m AOD
Direction of view: 146°
Nearest turbine: 1.384 km

Horizontal field of view: 53.5° (planar projection)
Principal distance: 812.5 mm
Paper size: 841 x 297 mm (half A1)
Correct printed image size: 820 x 260 mm

Camera: Canon EOS 6D Mark II
Lens: EF50mm f/1.4 USM
Camera height: 1.5 m AGL
Date and time: 01/03/2022, 16:14

Figure: 6.20d
Viewpoint 2: A966, Hundland Road junction

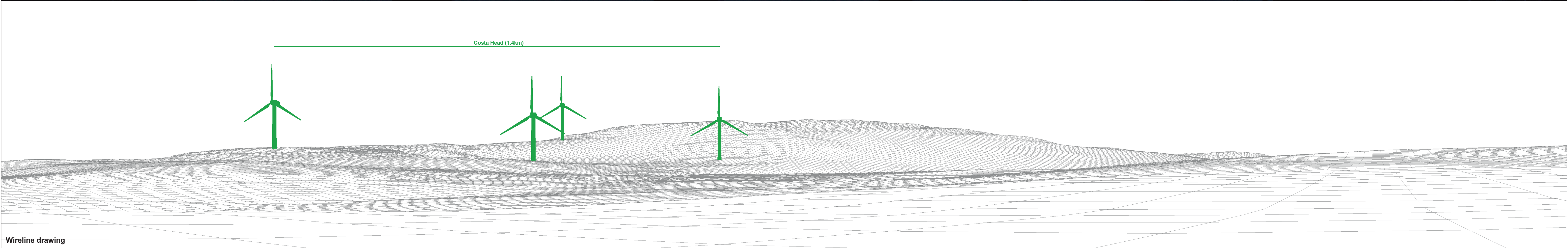


Photomontage

View flat at a comfortable arm's length

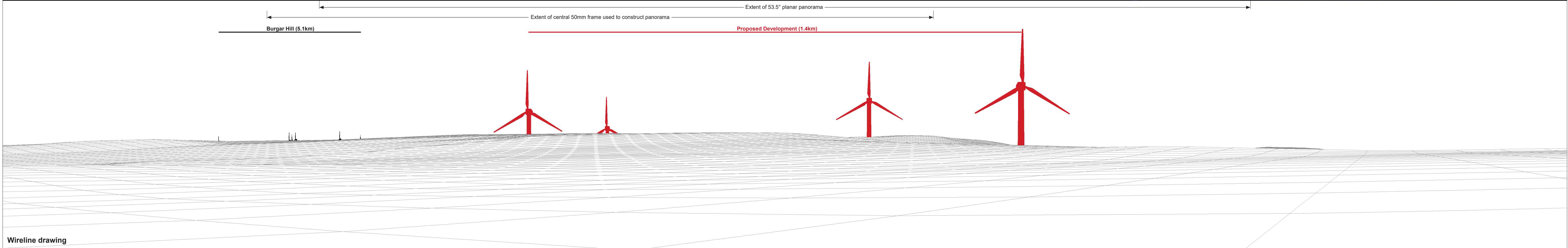
OS reference: 329328 E 1029601 N	Horizontal field of view: 53.5° (planar projection)	Camera: Canon EOS 6D Mark II
Eye level: 51.4 m AOD	Principal distance: 812.5 mm	Lens: EF50mm f/1.4 USM
Direction of view: 146°	Paper size: 841 x 297 mm (half A1)	Camera height: 1.5 m AGL
Nearest turbine: 1.384 km	Correct printed image size: 820 x 260 mm	Date and time: 01/03/2022, 16:14

Figure: 6.20e
Viewpoint 2: A966, Hundland Road junction



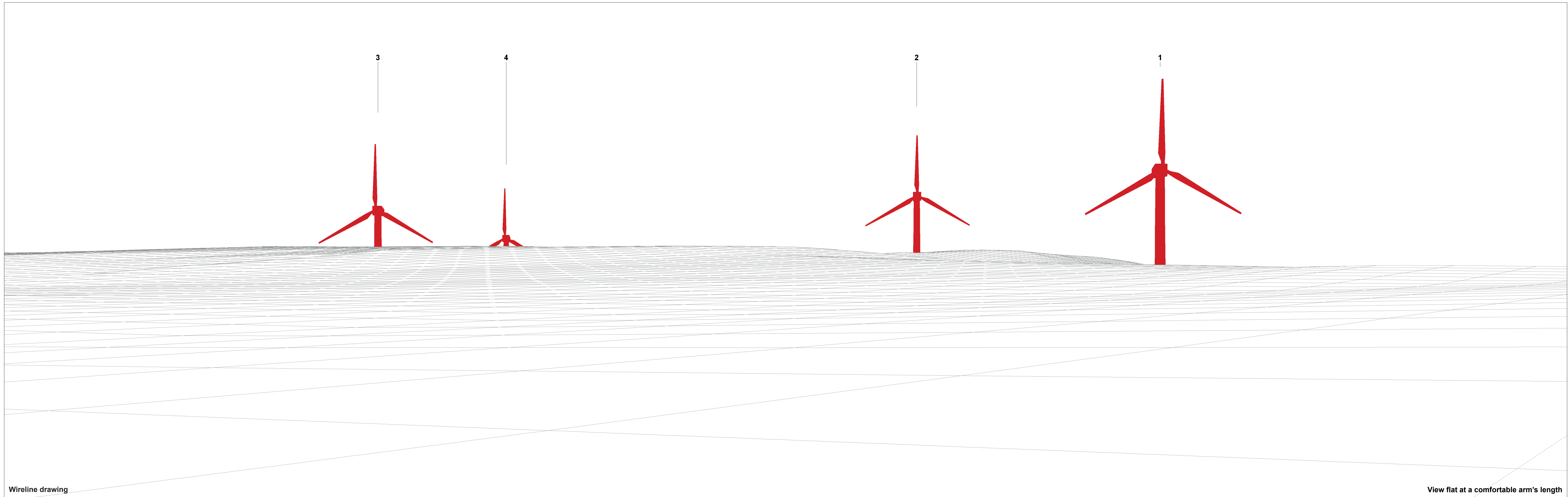
OS reference:	329328 E 1029601 N	Horizontal field of view:	90° (cylindrical projection)	Camera:	Canon EOS 5D Mark II
Eye level:	51.4 m AOD	Principal distance:	522 mm	Lens:	EF50mm f/1.4 USM
Direction of view:	56°			Camera height:	1.5 m AGL
Nearest turbine:	1.384 km			Date and time:	18/05/2022, 21:18

Figure: 6.20f
Viewpoint 2: A966, Hundland Road junction



OS reference:	329328 E 1029601 N	Horizontal field of view:	90° (cylindrical projection)	Camera:	Canon EOS 5D Mark II
Eye level:	51.4 m AOD	Principal distance	522 mm	Lens:	EF50mm f/1.4 USM
Direction of view:	146°			Camera height:	1.5 m AGL
Nearest turbine:	1.384 km			Date and time:	18/05/2022, 21:18

Figure: 6.20g
Viewpoint 2: A966, Hundland Road junction



Wireline drawing

View flat at a comfortable arm's length

OS reference: 329328 E 1029601 N
Eye level: 51.4 m AOD
Direction of view: 146°
Nearest turbine: 1.384 km

Horizontal field of view: 53.5° (planar projection)
Principal distance: 812.5 mm
Paper size: 841 x 297 mm (half A1)
Correct printed image size: 820 x 260 mm

Camera: Canon EOS 5D Mark II
Lens: EF50mm f/1.4 USM
Camera height: 1.5 m AGL
Date and time: 18/05/2022, 21:18

Figure: 6.20h
Viewpoint 2: A966, Hundland Road junction



Photomontage (2000cd)

View flat at a comfortable arm's length

OS reference:	329328 E 1029601 N	Horizontal field of view:	53.5° (planar projection)	Camera:	Canon EOS 5D Mark II
Eye level:	51.4 m AOD	Principal distance:	812.5 mm	Lens:	EF50mm f/1.4 USM
Direction of view:	146°	Paper size:	841 x 297 mm (half A1)	Camera height:	1.5 m AGL
Nearest turbine:	1.384 km	Correct printed image size:	820 x 260 mm	Date and time:	18/05/2022, 21:18

Figure: 6.20i
Viewpoint 2: A966, Hundland Road junction



Photomontage (200cd)

View flat at a comfortable arm's length

OS reference:	329328 E 1029601 N	Horizontal field of view:	53.5° (planar projection)	Camera:	Canon EOS 5D Mark II
Eye level:	51.4 m AOD	Principal distance:	812.5 mm	Lens:	EF50mm f/1.4 USM
Direction of view:	146°	Paper size:	841 x 297 mm (half A1)	Camera height:	1.5 m AGL
Nearest turbine:	1.384 km	Correct printed image size:	820 x 260 mm	Date and time:	18/05/2022, 21:18

Figure: 6.20j
Viewpoint 2: A966, Hundland Road junction