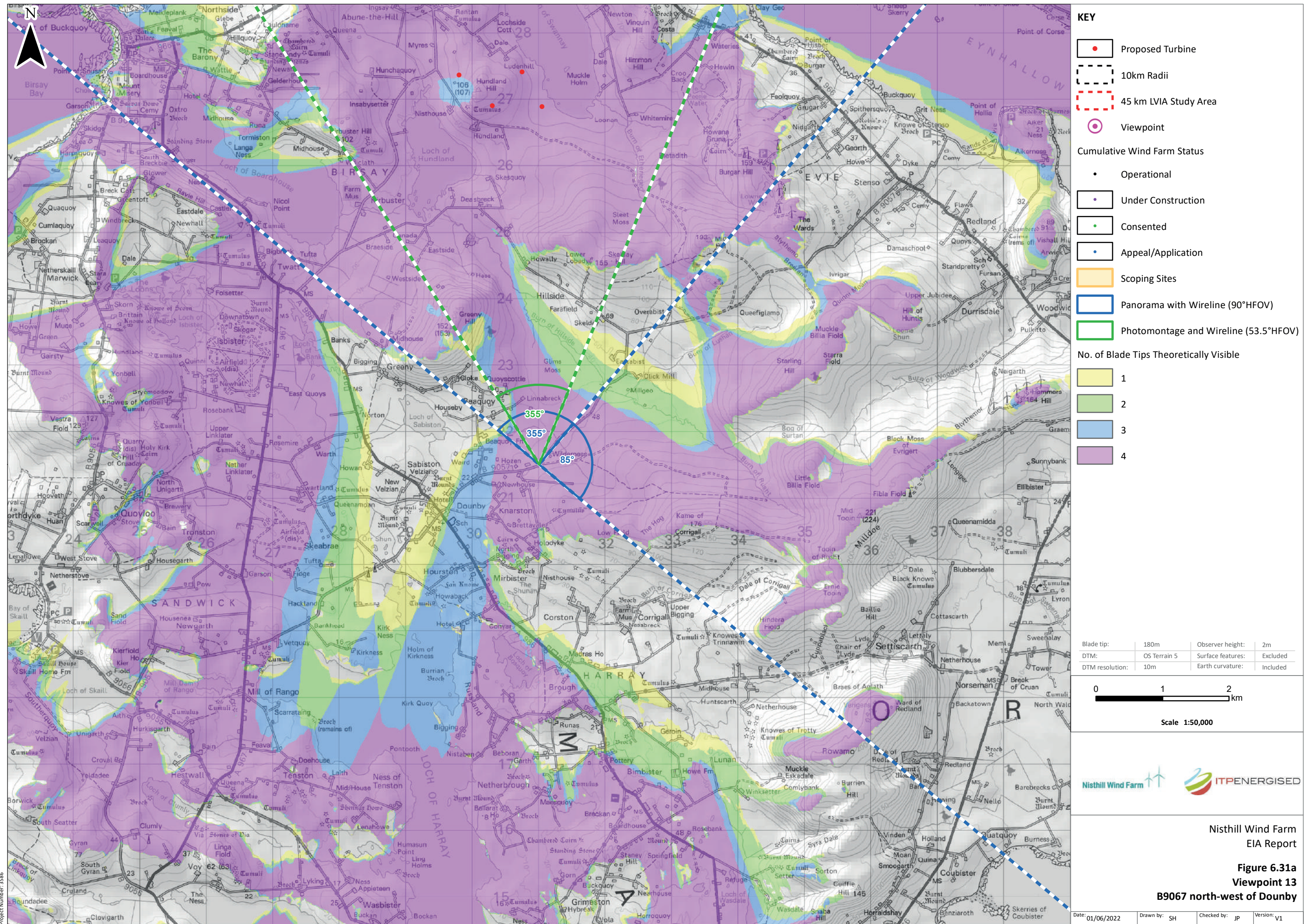


Scale: 1:350,000

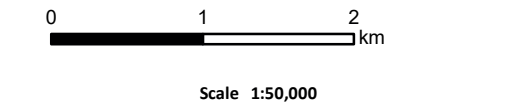


- KEY**
- Proposed Turbine
  - 10km Radii
  - 45 km LVIA Study Area
  - Viewpoint

- Cumulative Wind Farm Status**
- Operational
  - Under Construction
  - Consented
  - Appeal/Application
  - Scoping Sites
  - Panorama with Wireline (90°HFOV)
  - Photomontage and Wireline (53.5°HFOV)

- No. of Blade Tips Theoretically Visible**
- 1
  - 2
  - 3
  - 4

Blade tip:	180m	Observer height:	2m
DTM:	OS Terrain 5	Surface features:	Excluded
DTM resolution:	10m	Earth curvature:	Included



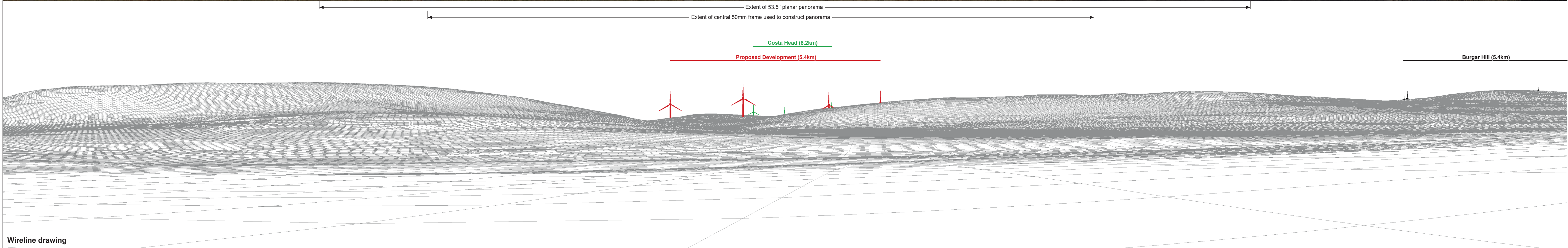
Nisthill Wind Farm  
EIA Report  
Figure 6.31a  
Viewpoint 13  
B9067 north-west of Dounby

Date: 01/06/2022 Drawn by: SH Checked by: JP Version: V1

Project Number: 1586

© Crown copyright and database rights 2022. Ordnance Survey 0100031673. Contains OS data © Crown copyright and database right (2022). Contains public sector information licensed under the Open Government Licence v3.0.

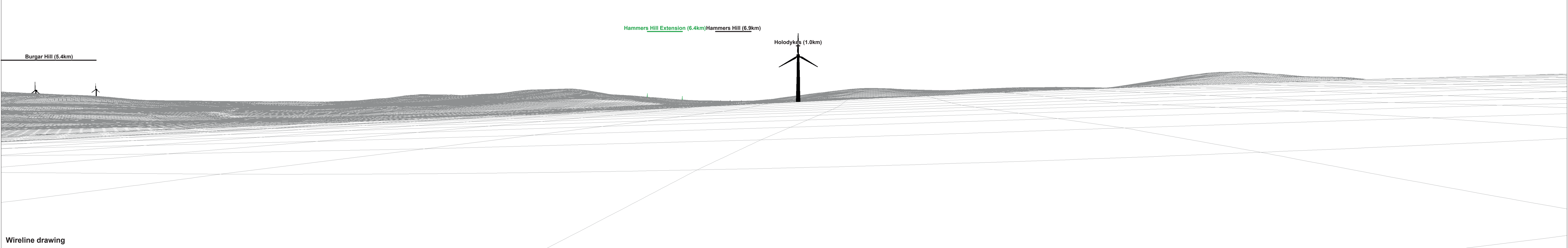




<b>OS reference:</b>	331013 E 1021507 N	<b>Horizontal field of view:</b>	90° (cylindrical projection)	<b>Camera:</b>	Canon EOS 6D Mark II
<b>Eye level:</b>	53.18 m AOD	<b>Principal distance:</b>	522 mm	<b>Lens:</b>	EF50mm f/1.4 USM
<b>Direction of view:</b>	355°			<b>Camera height:</b>	1.5 m AGL
<b>Nearest turbine:</b>	5.378 km			<b>Date and time:</b>	01/03/2022, 11:31

**Figure: 6.31b**  
Viewpoint 13: B9057 north-west of Dounby

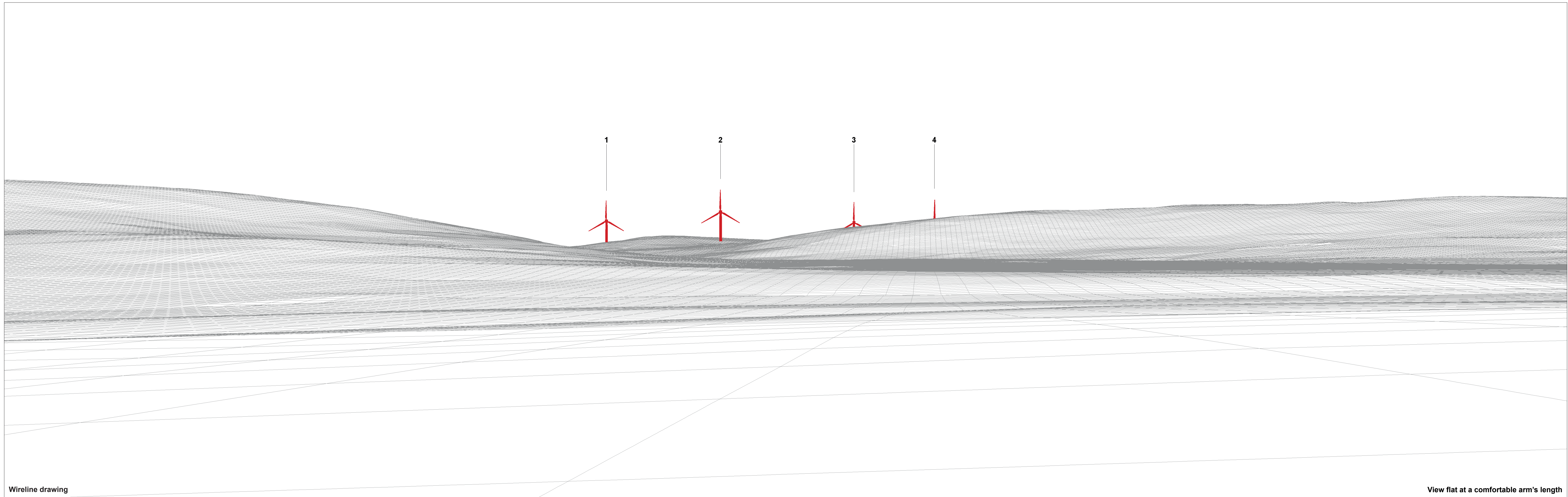




<b>OS reference:</b>	331013 E 1021507 N	<b>Horizontal field of view:</b>	90° (cylindrical projection)	<b>Camera:</b>	Canon EOS 6D Mark II
<b>Eye level:</b>	53.18 m AOD	<b>Principal distance</b>	522 mm	<b>Lens:</b>	EF50mm f/1.4 USM
<b>Direction of view:</b>	85°			<b>Camera height:</b>	1.5 m AGL
<b>Nearest turbine:</b>	5.378 km			<b>Date and time:</b>	01/03/2022, 11:31

**Figure: 6.31c**  
Viewpoint 13: B9057 north-west of Dounby





Wireline drawing

View flat at a comfortable arm's length

OS reference: 331013 E 1021507 N  
Eye level: 53.18 m AOD  
Direction of view: 355°  
Nearest turbine: 5.378 km

Horizontal field of view: 53.5° (planar projection)  
Principal distance: 812.5 mm  
Paper size: 841 x 297 mm (half A1)  
Correct printed image size: 820 x 260 mm

Camera: Canon EOS 6D Mark II  
Lens: EF50mm f/1.4 USM  
Camera height: 1.5 m AGL  
Date and time: 01/03/2022, 11:31

Figure: 6.31d  
Viewpoint 13: B9057 north-west of Dounby





Photomontage

View flat at a comfortable arm's length

<b>OS reference:</b> 331013 E 1021507 N	<b>Horizontal field of view:</b> 53.5° (planar projection)	<b>Camera:</b> Canon EOS 6D Mark II
<b>Eye level:</b> 53.18 m AOD	<b>Principal distance:</b> 812.5 mm	<b>Lens:</b> EF50mm f/1.4 USM
<b>Direction of view:</b> 355°	<b>Paper size:</b> 841 x 297 mm (half A1)	<b>Camera height:</b> 1.5 m AGL
<b>Nearest turbine:</b> 5.378 km	<b>Correct printed image size:</b> 820 x 260 mm	<b>Date and time:</b> 01/03/2022, 11:31

**Figure: 6.31e**  
**Viewpoint 13: B9057 north-west of Dounby**