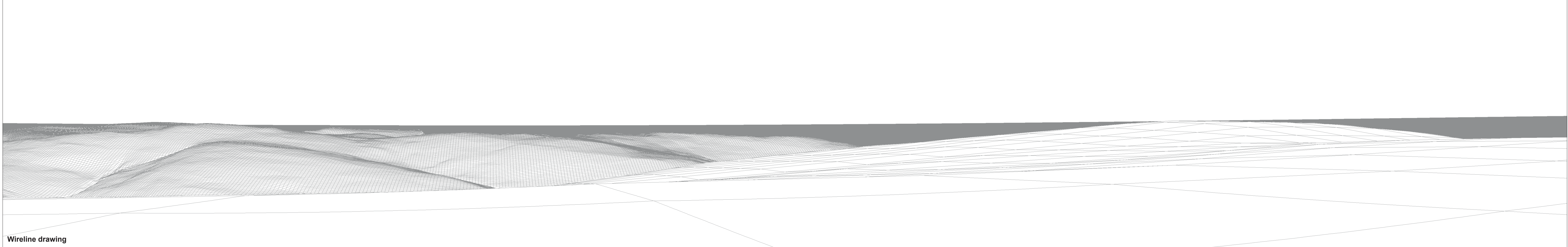






Baseline photograph

This image provides landscape and visual context only

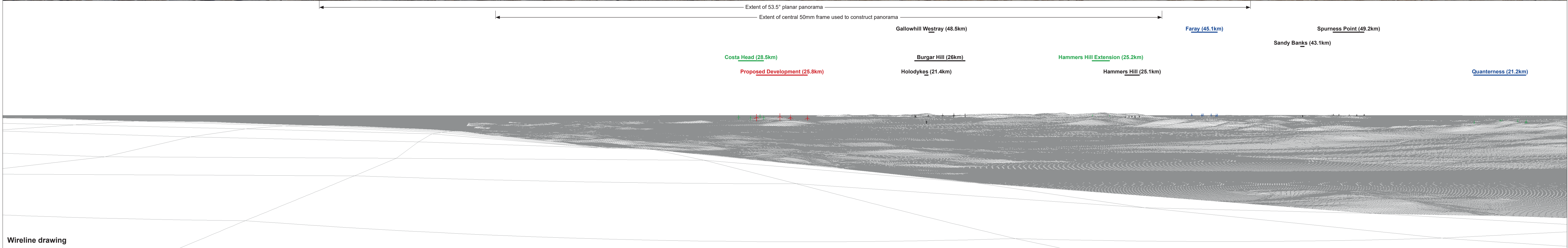


Wireline drawing

|   |   |                                       |
|---|---|---------------------------------------|
| <b>OS reference:</b> 322893 E 1002188 N | <b>Horizontal field of view:</b> 90° (cylindrical projection) | <b>Camera:</b> Canon EOS 5D Mark II   |
| <b>Eye level:</b> 479.75 m AOD          | <b>Principal distance:</b> 522 mm                             | <b>Lens:</b> EF50mm f/1.4 USM         |
| <b>Direction of view:</b> 287°          |   | <b>Camera height:</b> 1.5 m AGL       |
| <b>Nearest turbine:</b> 25.801 km       |   | <b>Date and time:</b> 20/03/20, 15:33 |

**Figure: 6.37b**  
**Viewpoint 19: Ward Hill, Hoy**





OS reference: 322893 E 1002188 N  
 Eye level: 479.75 m AOD  
 Direction of view: 17°  
 Nearest turbine: 25.801 km

Horizontal field of view: 90° (cylindrical projection)  
 Principal distance: 522 mm

Camera: Canon EOS 5D Mark II  
 Lens: EF50mm f/1.4 USM  
 Camera height: 1.5 m AGL  
 Date and time: 20/03/20, 15:33

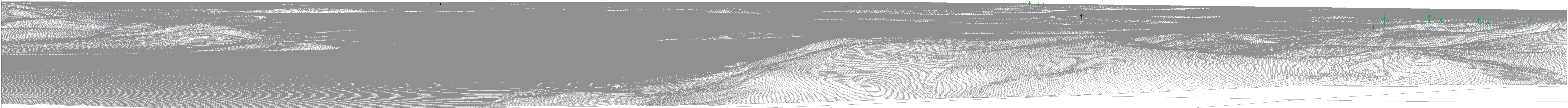
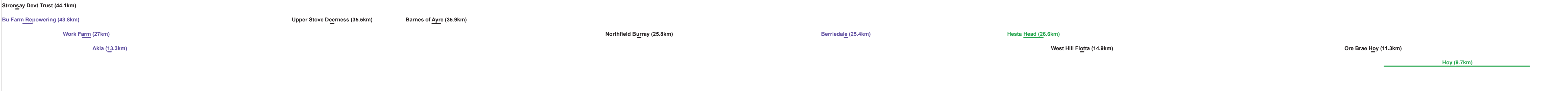
Figure: 6.37c  
 Viewpoint 19: Ward Hill, Hoy





Baseline photograph

This image provides landscape and visual context only



Wireline drawing

|                           |                    |                                  |                              |                       |                      |
|---------------------------|--------------------|----------------------------------|------------------------------|-----------------------|----------------------|
| <b>OS reference:</b>      | 322893 E 1002188 N | <b>Horizontal field of view:</b> | 90° (cylindrical projection) | <b>Camera:</b>        | Canon EOS 5D Mark II |
| <b>Eye level:</b>         | 479.75 m AOD       | <b>Principal distance</b>        | 522 mm                       | <b>Lens:</b>          | EF50mm f/1.4 USM     |
| <b>Direction of view:</b> | 107°               |                                  |                              | <b>Camera height:</b> | 1.5 m AGL            |
| <b>Nearest turbine:</b>   | 25.801 km          |                                  |                              | <b>Date and time:</b> | 20/03/20, 15:33      |

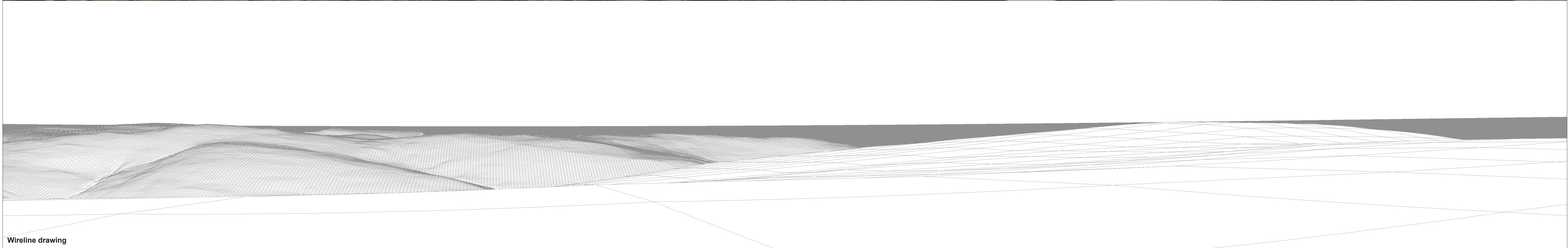
**Figure: 6.37d**  
**Viewpoint 19: Ward Hill, Hoy**





Baseline photograph

This image provides landscape and visual context only

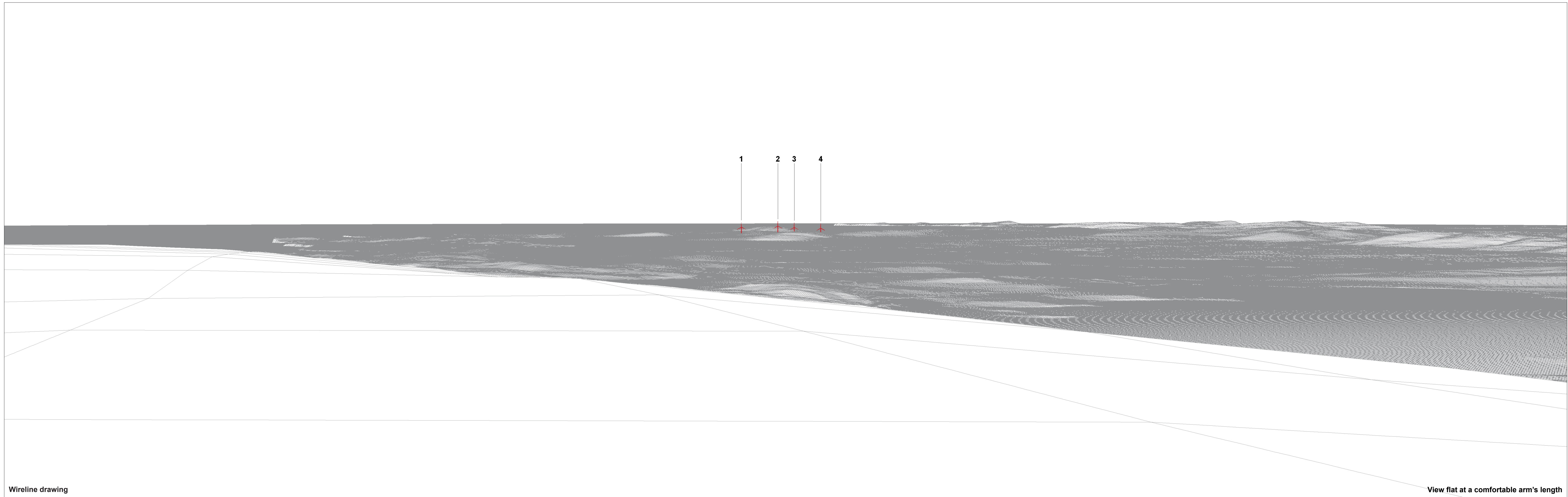


Wireline drawing

|   |   |                                       |
|---|---|---------------------------------------|
| <b>OS reference:</b> 322893 E 1002188 N | <b>Horizontal field of view:</b> 90° (cylindrical projection) | <b>Camera:</b> Canon EOS 5D Mark II   |
| <b>Eye level:</b> 479.75 m AOD          | <b>Principal distance:</b> 522 mm                             | <b>Lens:</b> EF50mm f/1.4 USM         |
| <b>Direction of view:</b> 197°          |   | <b>Camera height:</b> 1.5 m AGL       |
| <b>Nearest turbine:</b> 25.801 km       |   | <b>Date and time:</b> 20/03/20, 15:33 |

Figure: 6.37e  
Viewpoint 19: Ward Hill, Hoy





Wireline drawing

View flat at a comfortable arm's length

**OS reference:** 322893 E 1002188 N  
**Eye level:** 479.75 m AOD  
**Direction of view:** 17°  
**Nearest turbine:** 25.801 km

**Horizontal field of view:** 53.5° (planar projection)  
**Principal distance:** 812.5 mm  
**Paper size:** 841 x 297 mm (half A1)  
**Correct printed image size:** 820 x 260 mm

**Camera:** Canon EOS 5D Mark II  
**Lens:** EF50mm f/1.4 USM  
**Camera height:** 1.5 m AGL  
**Date and time:** 20/03/20, 15:33

**Figure: 6.37f**  
**Viewpoint 19: Ward Hill, Hoy**





Photomontage

View flat at a comfortable arm's length

**OS reference:** 322893 E 1002188 N  
**Eye level:** 479.75 m AOD  
**Direction of view:** 17°  
**Nearest turbine:** 25.801 km

**Horizontal field of view:** 53.5° (planar projection)  
**Principal distance:** 812.5 mm  
**Paper size:** 841 x 297 mm (half A1)  
**Correct printed image size:** 820 x 260 mm

**Camera:** Canon EOS 5D Mark II  
**Lens:** EF50mm f/1.4 USM  
**Camera height:** 1.5 m AGL  
**Date and time:** 20/03/20, 15:33

**Figure: 6.37g**  
**Viewpoint 19: Ward Hill, Hoy**