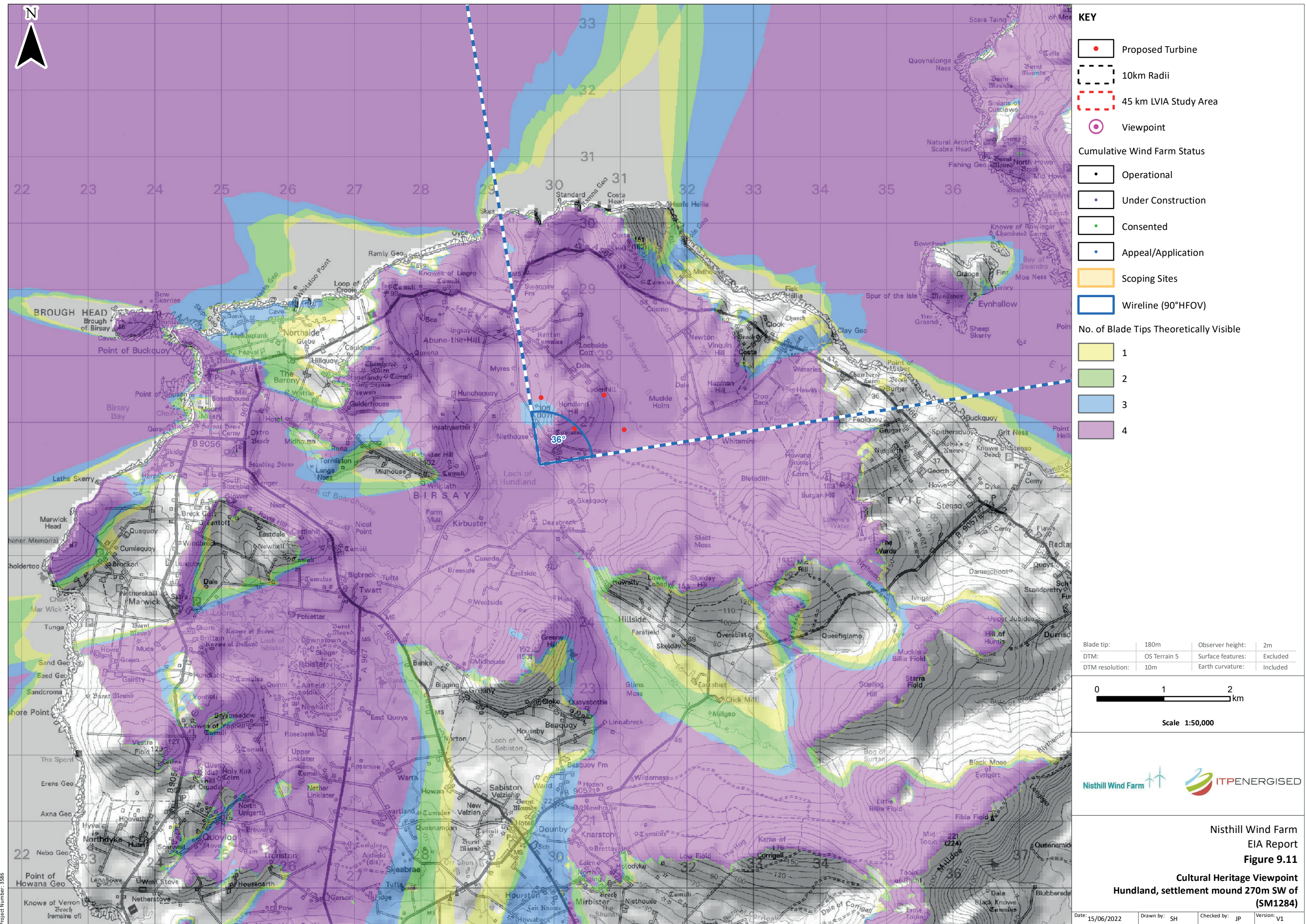
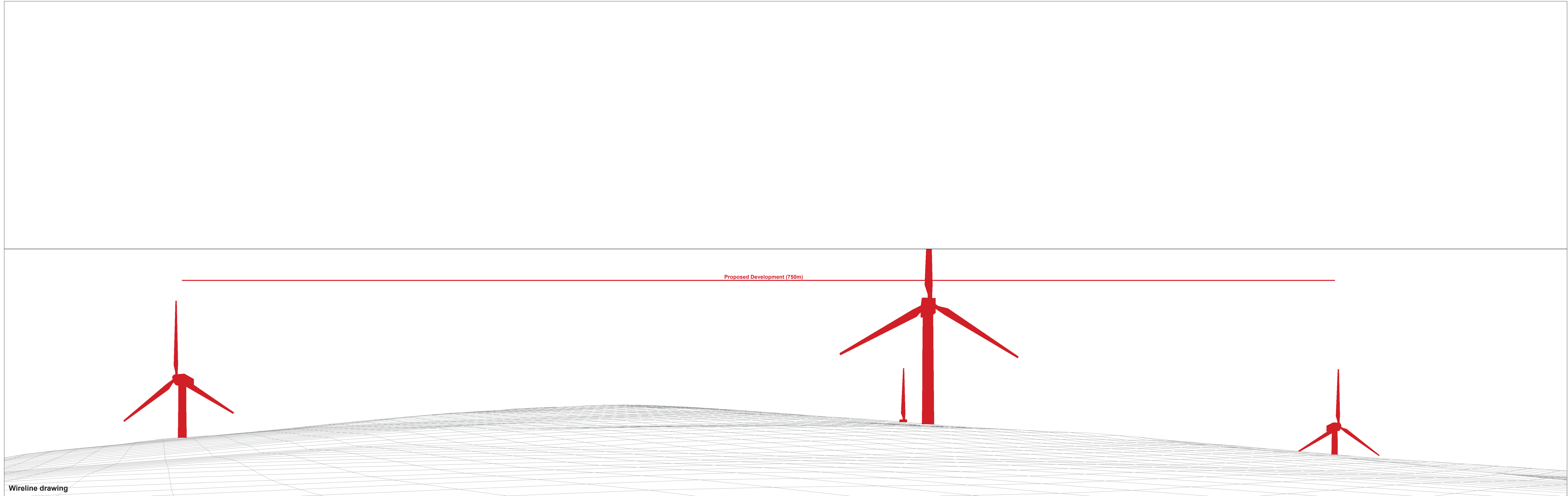


Scale: 1:350,000



© Crown copyright and database rights 2022. Ordnance Survey 0100031673. Contains OS data © Crown copyright and database right (2022). Contains public sector information licensed under the Open Government Licence v3.0.



Wireline drawing

OS reference: 329789 E 1026362 N
 Eye level: 30.87 m AOD
 Direction of view: 36°
 Nearest turbine: 0.75 km

Horizontal field of view: 90° (cylindrical projection)
 Principal distance: 522 mm

Figure: 9.11
 Site No. 32: Hundland, settlement mound 270m
 SW of (List No. SM1284)