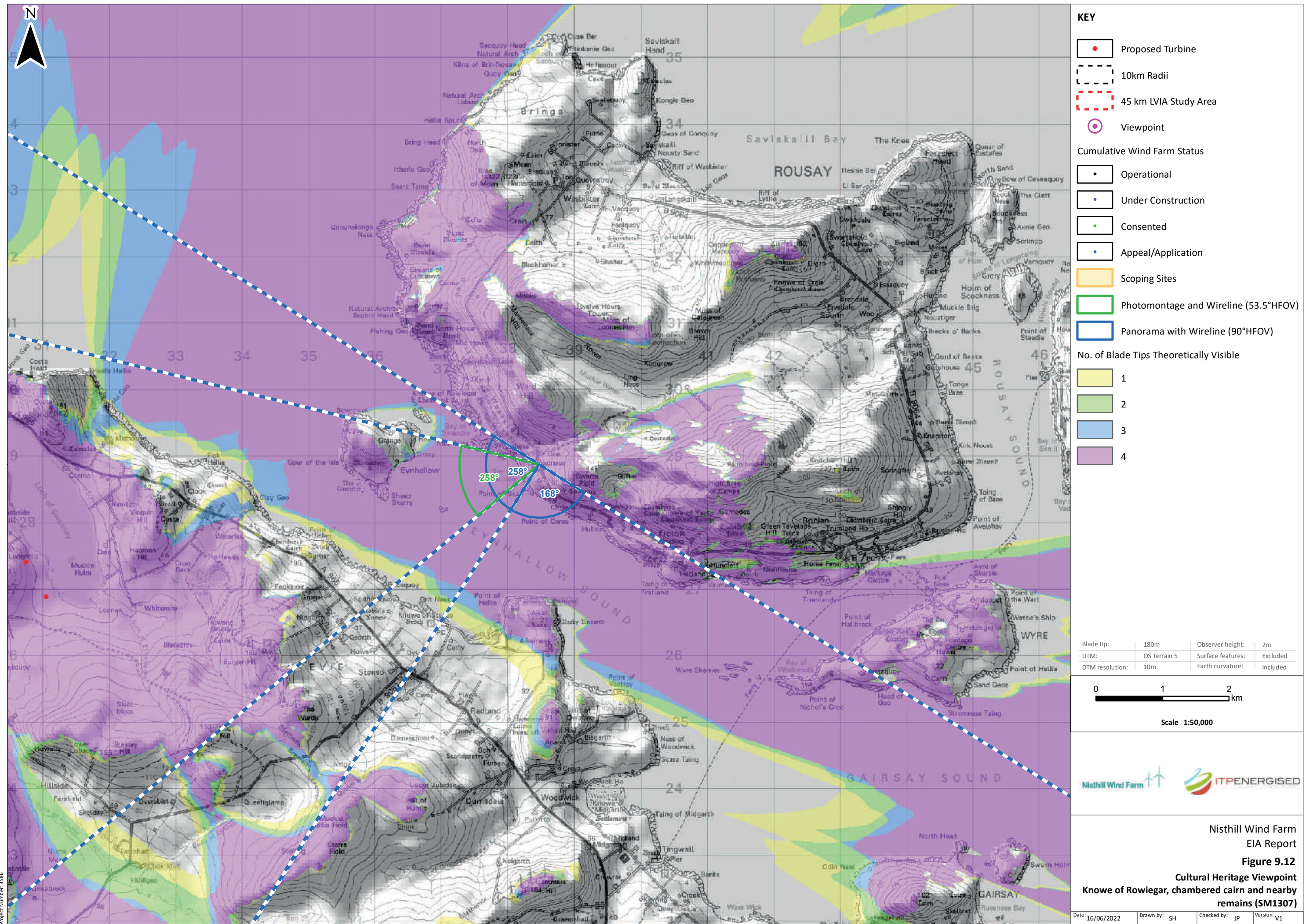
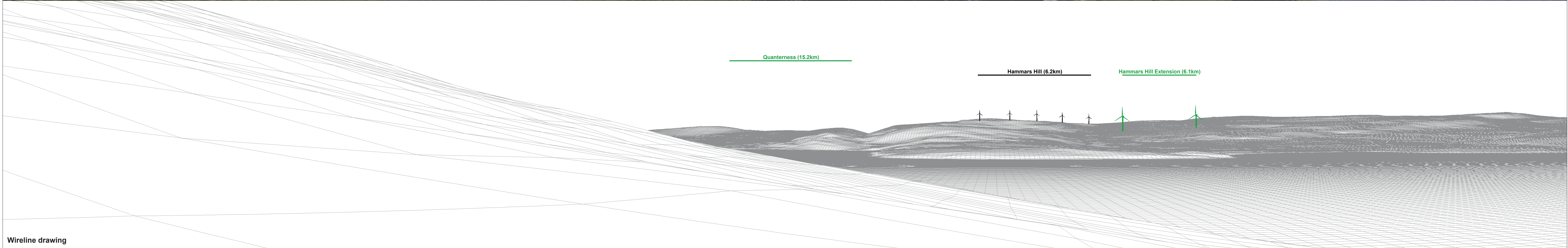


Scale: 1:350,000



© Crown copyright and database rights 2022. Ordnance Survey 0100031673. Contains OS data © Crown copyright and database right (2022). Contains public sector information licensed under the Open Government Licence v3.0.



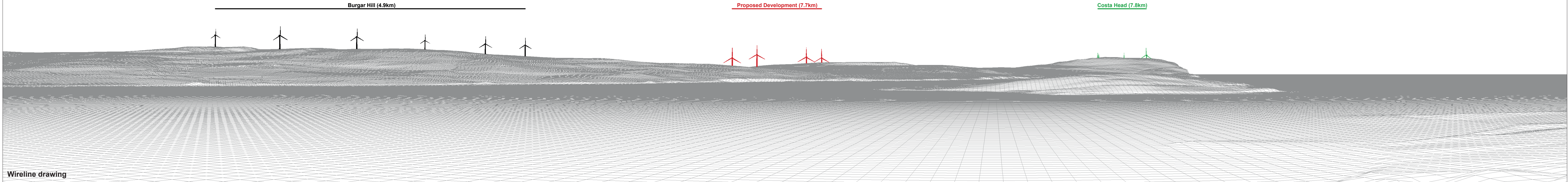
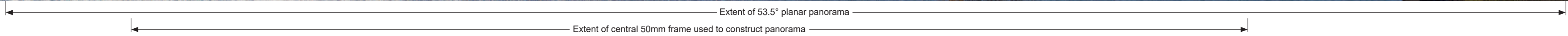
<b>OS reference:</b>	338473 E 1028876 N	<b>Horizontal field of view:</b>	90° (cylindrical projection)	<b>Camera:</b>	Canon EOS 5D Mark II
<b>Eye level:</b>	45.47 m AOD	<b>Principal distance</b>	522 mm	<b>Lens:</b>	EF50mm f/1.4 USM
<b>Direction of view:</b>	168°			<b>Camera height:</b>	1.5 m AGL
<b>Nearest turbine:</b>	7.677 km			<b>Date and time:</b>	18/05/2022, 14:54

**Figure: 9.12**  
**Site No. 51: Knowe of Rowiegar, chambered cairn and nearby remains (List No. SM1307)**



Baseline photograph

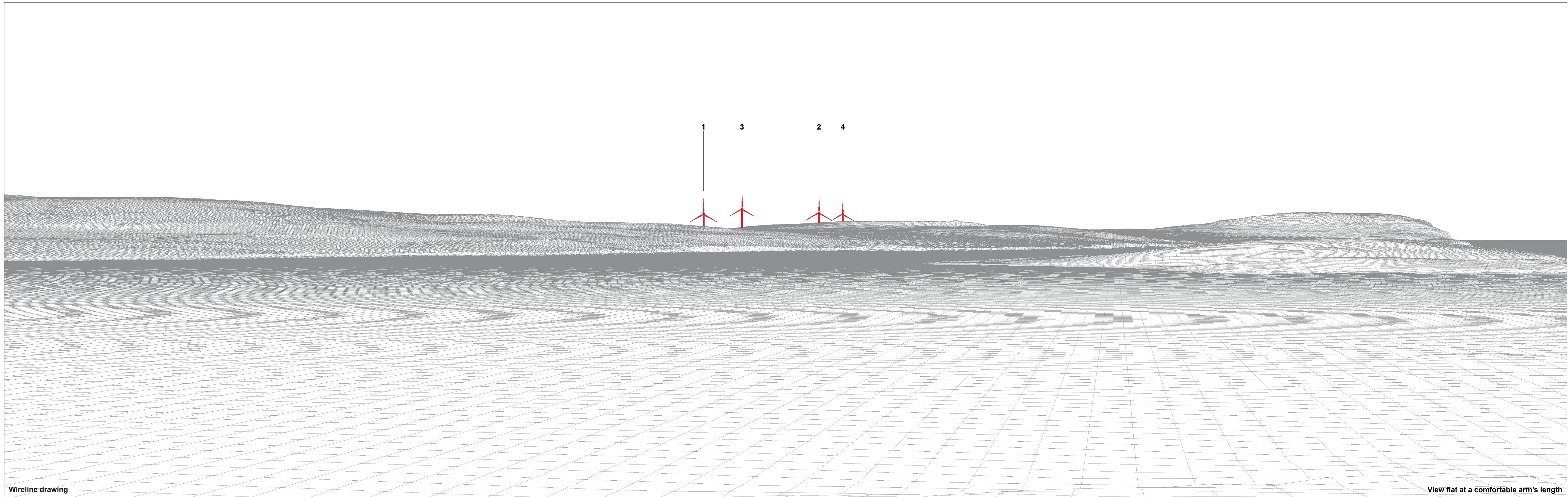
This image provides landscape and visual context only



Wireline drawing

<b>OS reference:</b>	338473 E 1028876 N	<b>Horizontal field of view:</b>	90° (cylindrical projection)	<b>Camera:</b>	Canon EOS 5D Mark II
<b>Eye level:</b>	45.47 m AOD	<b>Principal distance:</b>	522 mm	<b>Lens:</b>	EF50mm f/1.4 USM
<b>Direction of view:</b>	258°			<b>Camera height:</b>	1.5 m AGL
<b>Nearest turbine:</b>	7.677 km			<b>Date and time:</b>	18/05/2022, 14:54

**Figure: 9.12**  
**Site No. 51: Knowe of Rowiegar, chambered cairn and nearby remains (List No. SM1307)**



Wireline drawing

View flat at a comfortable arm's length

OS reference: 338473 E 1028876 N  
Eye level: 45.47 m AOD  
Direction of view: 258°  
Nearest turbine: 7.677 km

Horizontal field of view: 53.5° (planar projection)  
Principal distance: 812.5 mm  
Paper size: 841 x 297 mm (half A1)  
Correct printed image size: 820 x 260 mm

Camera: Canon EOS 5D Mark II  
Lens: EF50mm f/1.4 USM  
Camera height: 1.5 m AGL  
Date and time: 18/05/2022, 14:54

Figure: 9.12  
Site No. 51: Knowe of Rowiegar, chambered cairn  
and nearby remains (List No. SM1307)



Photomontage

View flat at a comfortable arm's length

<b>OS reference:</b> 338473 E 1028876 N	<b>Horizontal field of view:</b> 53.5° (planar projection)	<b>Camera:</b> Canon EOS 5D Mark II
<b>Eye level:</b> 45.47 m AOD	<b>Principal distance:</b> 812.5 mm	<b>Lens:</b> EF50mm f/1.4 USM
<b>Direction of view:</b> 258°	<b>Paper size:</b> 841 x 297 mm (half A1)	<b>Camera height:</b> 1.5 m AGL
<b>Nearest turbine:</b> 7.677 km	<b>Correct printed image size:</b> 820 x 260 mm	<b>Date and time:</b> 18/05/2022, 14:54

**Figure: 9.12**  
Site No. 51: Knowe of Rowiegar, chambered cairn and nearby remains (List No. SM1307)