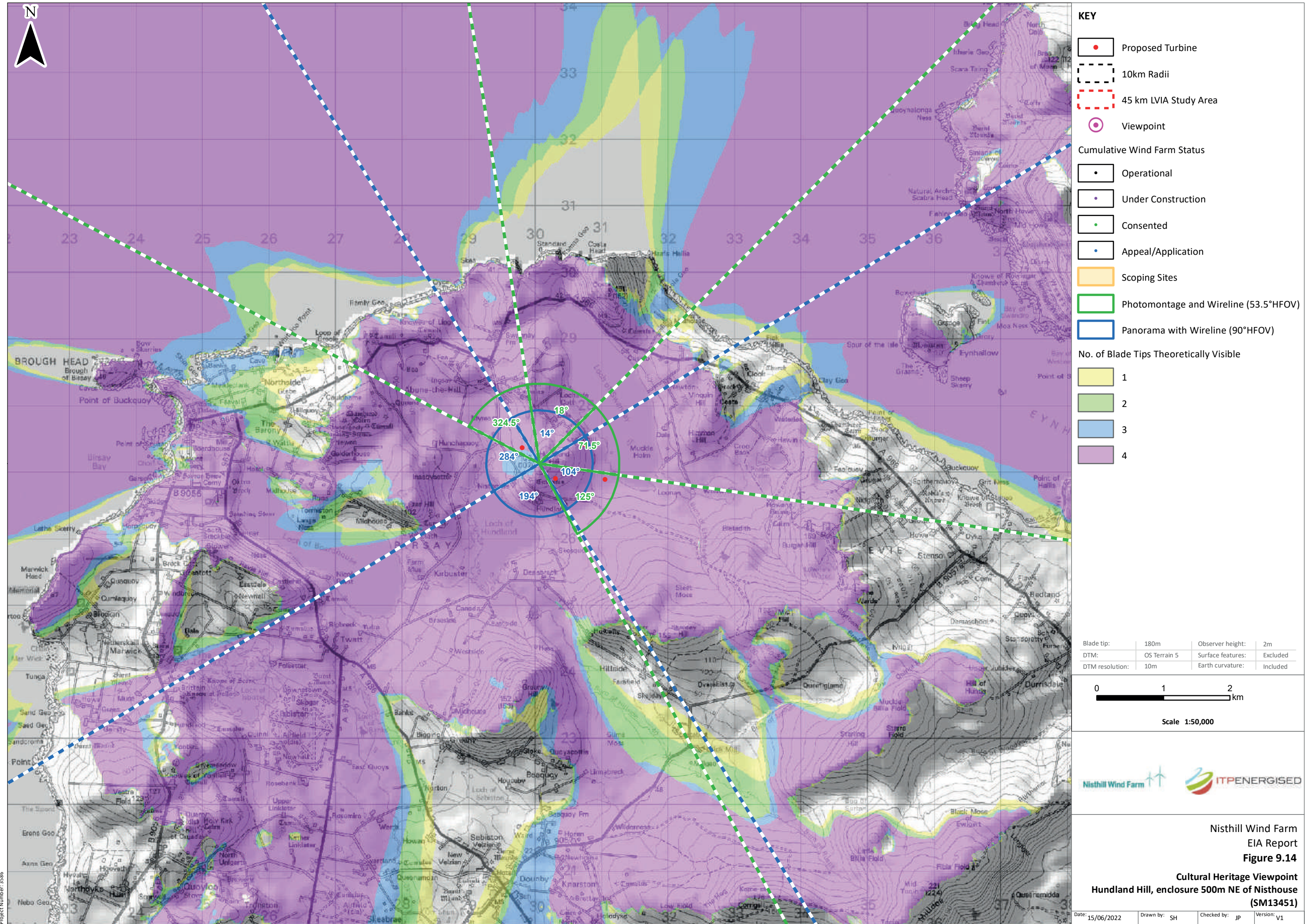


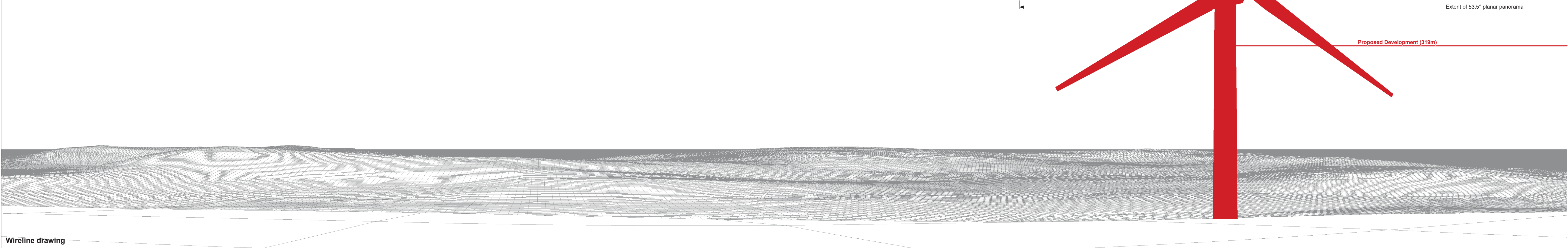
Scale: 1:350,000



© Crown copyright and database rights 2022. Ordnance Survey 0100031673. Contains OS data © Crown copyright and database right (2022). Contains public sector information licensed under the Open Government Licence v3.0.



Baseline photograph



Wireline drawing

OS reference:	330094 E 1027134 N	Horizontal field of view:	90° (cylindrical projection)	Camera:	Canon EOS 5D Mark II
Eye level:	106.61 m AOD	Principal distance	522 mm	Lens:	EF50mm f/1.4 USM
Direction of view:	284°			Camera height:	1.5 m AGL
Nearest turbine:	0.319 km			Date and time:	19/05/2022, 12:16

Figure: 9.14
Site No. 65: Hundland Hill, enclosure 500m NE of Nisthouse (List No. SM13451)

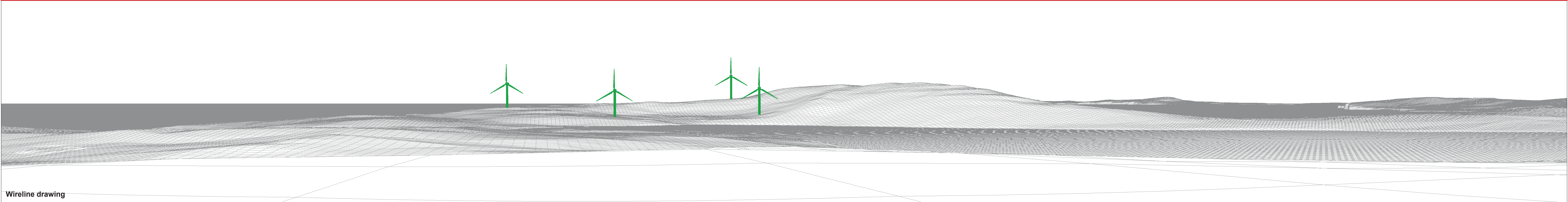


Baseline photograph

Extent of 53.5° planar panorama

Costa Head (2.6km)

Proposed Development (319m)



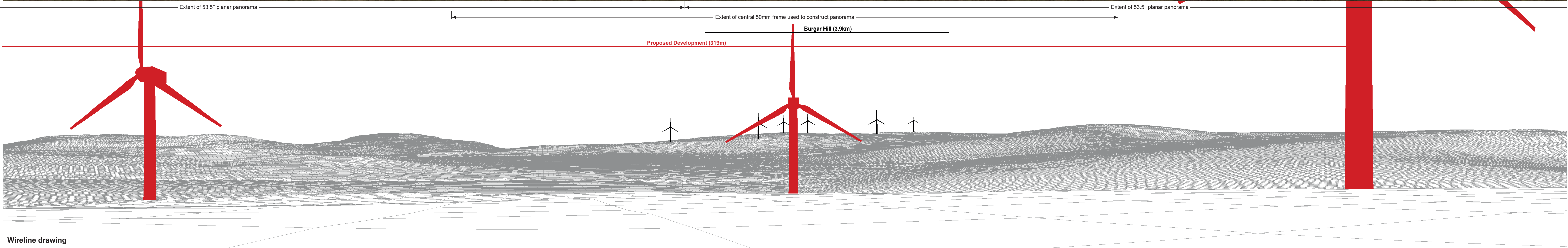
Wireline drawing

OS reference: 330094 E 1027134 N
 Eye level: 106.61 m AOD
 Direction of view: 14°
 Nearest turbine: 0.319 km

Horizontal field of view: 90° (cylindrical projection)
 Principal distance: 522 mm

Camera: Canon EOS 5D Mark II
 Lens: EF50mm f/1.4 USM
 Camera height: 1.5 m AGL
 Date and time: 19/05/2022, 12:16

Figure: 9.14
 Site No. 65: Hundland Hill, enclosure 500m NE of Nisthouse (List No. SM13451)

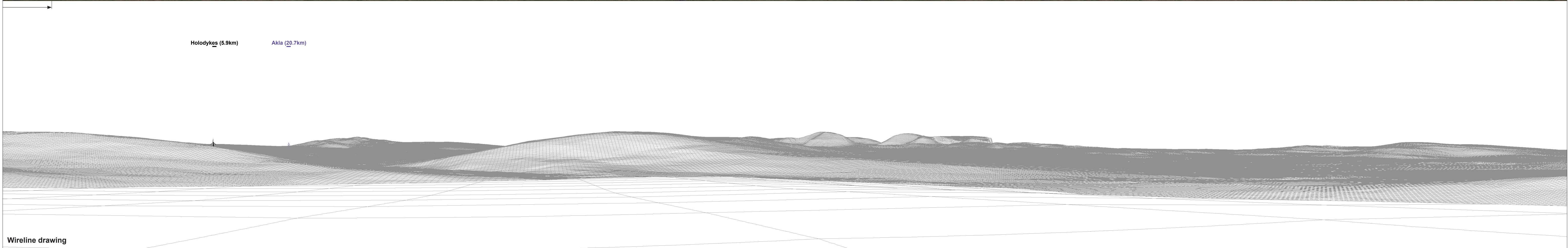


OS reference: 330094 E 1027134 N
 Eye level: 106.61 m AOD
 Direction of view: 104°
 Nearest turbine: 0.319 km

Horizontal field of view: 90° (cylindrical projection)
 Principal distance: 522 mm

Camera: Canon EOS 5D Mark II
 Lens: EF50mm f/1.4 USM
 Camera height: 1.5 m AGL
 Date and time: 19/05/2022, 12:16

Figure: 9.14
 Site No. 65: Hundland Hill, enclosure 500m NE of
 Nisthouse (List No. SM13451)

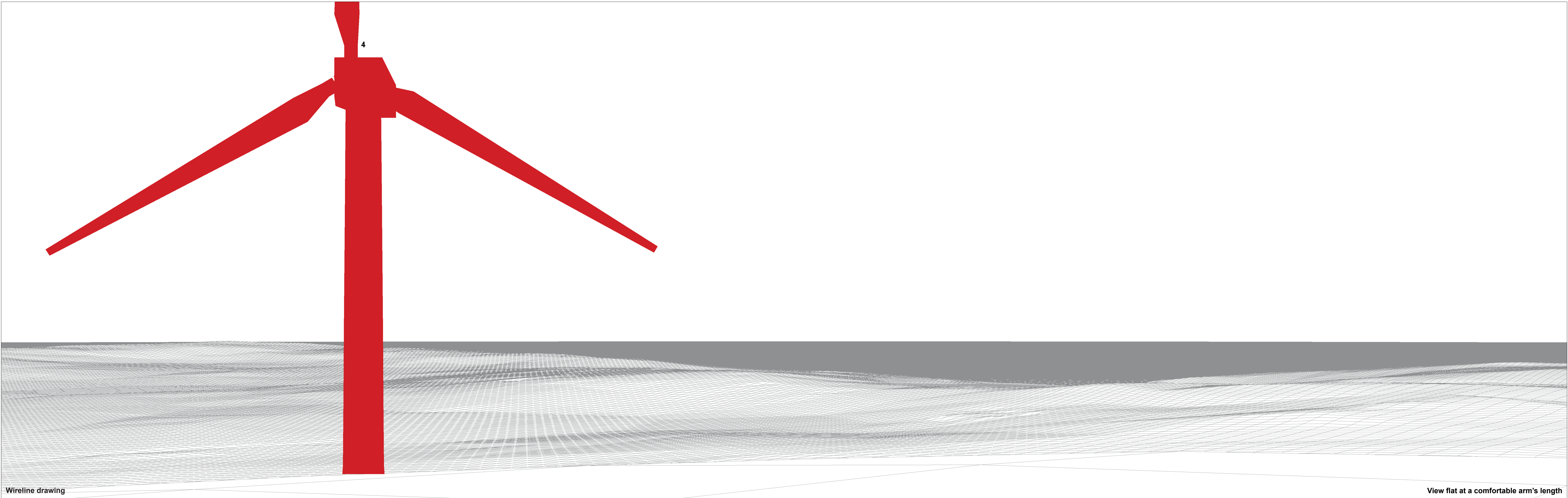


OS reference: 330094 E 1027134 N
 Eye level: 106.61 m AOD
 Direction of view: 194°
 Nearest turbine: 0.319 km

Horizontal field of view: 90° (cylindrical projection)
 Principal distance: 522 mm

Camera: Canon EOS 5D Mark II
 Lens: EF50mm f/1.4 USM
 Camera height: 1.5 m AGL
 Date and time: 19/05/2022, 12:16

Figure: 9.14
Site No. 65: Hundland Hill, enclosure 500m NE of Nisthouse (List No. SM13451)



Wireline drawing

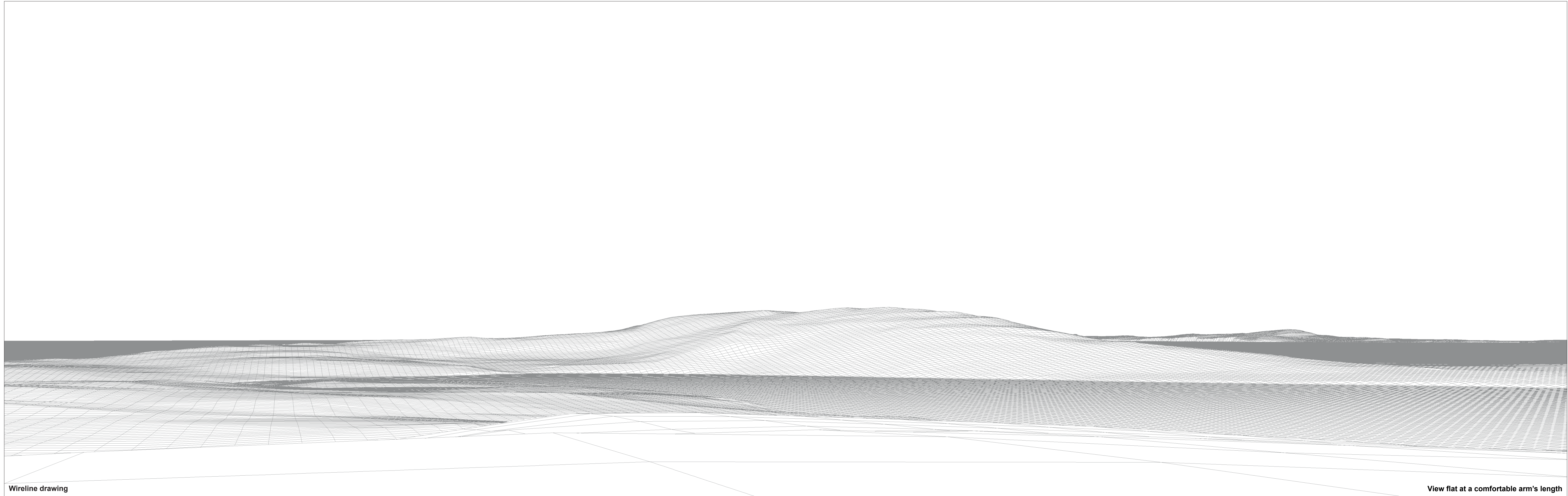
View flat at a comfortable arm's length

OS reference: 330094 E 1027134 N
Eye level: 106.61 m AOD
Direction of view: 324.5°
Nearest turbine: 0.319 km

Horizontal field of view: 53.5° (planar projection)
Principal distance: 812.5 mm
Paper size: 841 x 297 mm (half A1)
Correct printed image size: 820 x 260 mm

Camera: Canon EOS 5D Mark II
Lens: EF50mm f/1.4 USM
Camera height: 1.5 m AGL
Date and time: 19/05/2022, 12:16

Figure: 9.14
Site No. 65: Hundland Hill, enclosure 500m NE of Nisthouse (List No. SM13451)



Wireline drawing

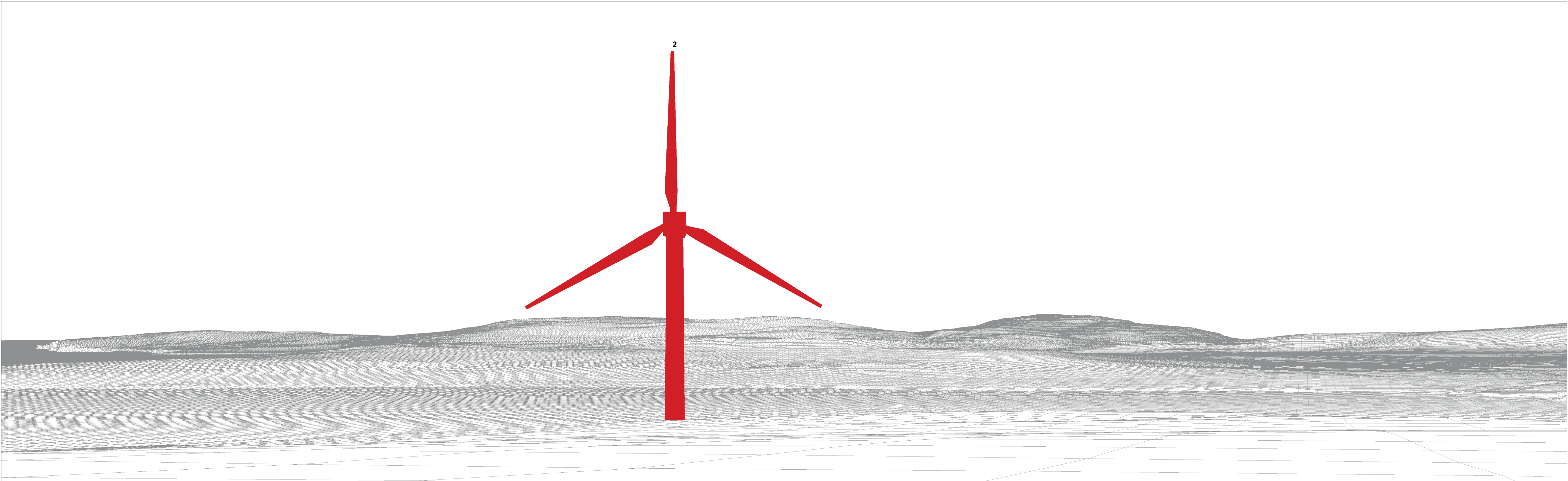
View flat at a comfortable arm's length

OS reference: 330094 E 1027134 N
Eye level: 106.61 m AOD
Direction of view: 18°
Nearest turbine: 0.319 km

Horizontal field of view: 53.5° (planar projection)
Principal distance: 812.5 mm
Paper size: 841 x 297 mm (half A1)
Correct printed image size: 820 x 260 mm

Camera: Canon EOS 5D Mark II
Lens: EF50mm f/1.4 USM
Camera height: 1.5 m AGL
Date and time: 19/05/2022, 12:16

Figure: 9.14
Site No. 65: Hundland Hill, enclosure 500m NE of Nisthouse (List No. SM13451)



Wireline drawing

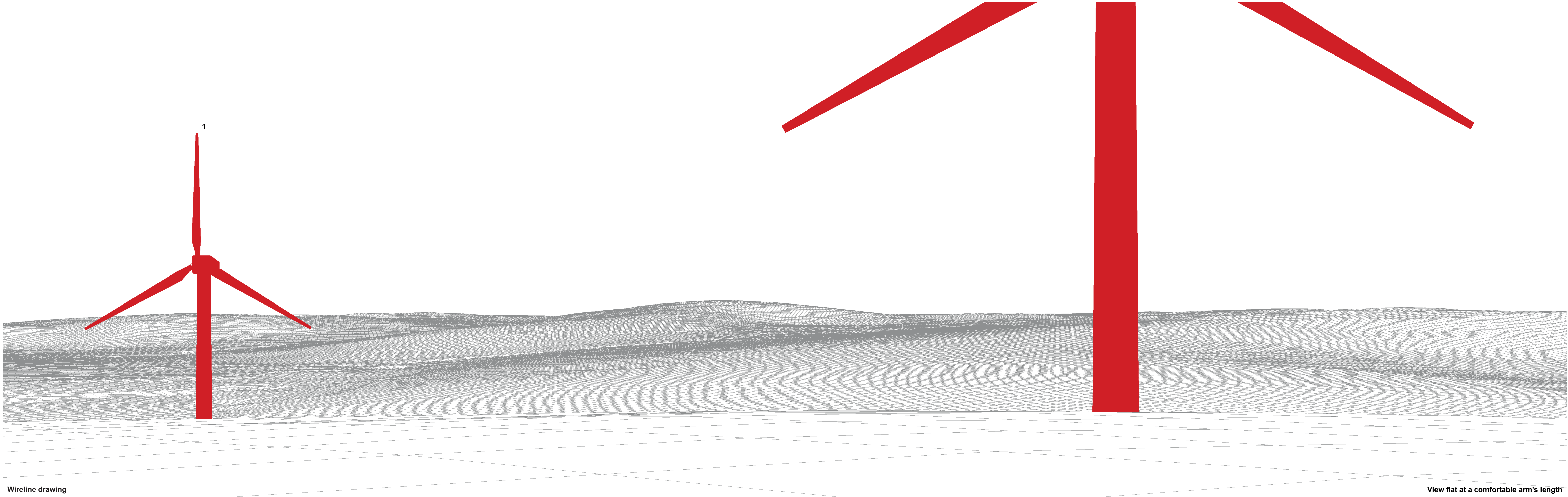
View flat at a comfortable arm's length

OS reference: 330094 E 1027134 N
Eye level: 106.61 m AOD
Direction of view: 71.5°
Nearest turbine: 0.319 km

Horizontal field of view: 53.5° (planar projection)
Principal distance: 812.5 mm
Paper size: 841 x 297 mm (half A1)
Correct printed image size: 820 x 260 mm

Camera: Canon EOS 5D Mark II
Lens: EF50mm f/1.4 USM
Camera height: 1.5 m AGL
Date and time: 19/05/2022, 12:16

Figure: 9.14
Site No. 65: Hundland Hill, enclosure 500m NE of Nisthouse (List No. SM13451)



Wireline drawing

View flat at a comfortable arm's length

OS reference: 330094 E 1027134 N
Eye level: 106.61 m AOD
Direction of view: 125°
Nearest turbine: 0.319 km

Horizontal field of view: 53.5° (planar projection)
Principal distance: 812.5 mm
Paper size: 841 x 297 mm (half A1)
Correct printed image size: 820 x 260 mm

Camera: Canon EOS 5D Mark II
Lens: EF50mm f/1.4 USM
Camera height: 1.5 m AGL
Date and time: 19/05/2022, 12:16

Figure: 9.14
Site No. 65: Hundland Hill, enclosure 500m NE of Nisthouse (List No. SM13451)



Photomontage

View flat at a comfortable arm's length

OS reference: 330094 E 1027134 N	Horizontal field of view: 53.5° (planar projection)	Camera: Canon EOS 5D Mark II
Eye level: 106.61 m AOD	Principal distance: 812.5 mm	Lens: EF50mm f/1.4 USM
Direction of view: 324.5°	Paper size: 841 x 297 mm (half A1)	Camera height: 1.5 m AGL
Nearest turbine: 0.319 km	Correct printed image size: 820 x 260 mm	Date and time: 19/05/2022, 12:16

Figure: 9.14
Site No. 65: Hundland Hill, enclosure 500m NE of Nisthouse (List No. SM13451)



Photomontage

View flat at a comfortable arm's length

OS reference: 330094 E 1027134 N	Horizontal field of view: 53.5° (planar projection)	Camera: Canon EOS 5D Mark II
Eye level: 106.61 m AOD	Principal distance: 812.5 mm	Lens: EF50mm f/1.4 USM
Direction of view: 18°	Paper size: 841 x 297 mm (half A1)	Camera height: 1.5 m AGL
Nearest turbine: 0.319 km	Correct printed image size: 820 x 260 mm	Date and time: 19/05/2022, 12:16

Figure: 9.14
Site No. 65: Hundland Hill, enclosure 500m NE of Nisthouse (List No. SM13451)



Photomontage

View flat at a comfortable arm's length

OS reference: 330094 E 1027134 N	Horizontal field of view: 53.5° (planar projection)	Camera: Canon EOS 5D Mark II
Eye level: 106.61 m AOD	Principal distance: 812.5 mm	Lens: EF50mm f/1.4 USM
Direction of view: 71.5°	Paper size: 841 x 297 mm (half A1)	Camera height: 1.5 m AGL
Nearest turbine: 0.319 km	Correct printed image size: 820 x 260 mm	Date and time: 19/05/2022, 12:16

Figure: 9.14
Site No. 65: Hundland Hill, enclosure 500m NE of Nisthouse (List No. SM13451)



Photomontage

View flat at a comfortable arm's length

OS reference: 330094 E 1027134 N	Horizontal field of view: 53.5° (planar projection)	Camera: Canon EOS 5D Mark II
Eye level: 106.61 m AOD	Principal distance: 812.5 mm	Lens: EF50mm f/1.4 USM
Direction of view: 125°	Paper size: 841 x 297 mm (half A1)	Camera height: 1.5 m AGL
Nearest turbine: 0.319 km	Correct printed image size: 820 x 260 mm	Date and time: 19/05/2022, 12:16

Figure: 9.14
Site No. 65: Hundland Hill, enclosure 500m NE of Nisthouse (List No. SM13451)