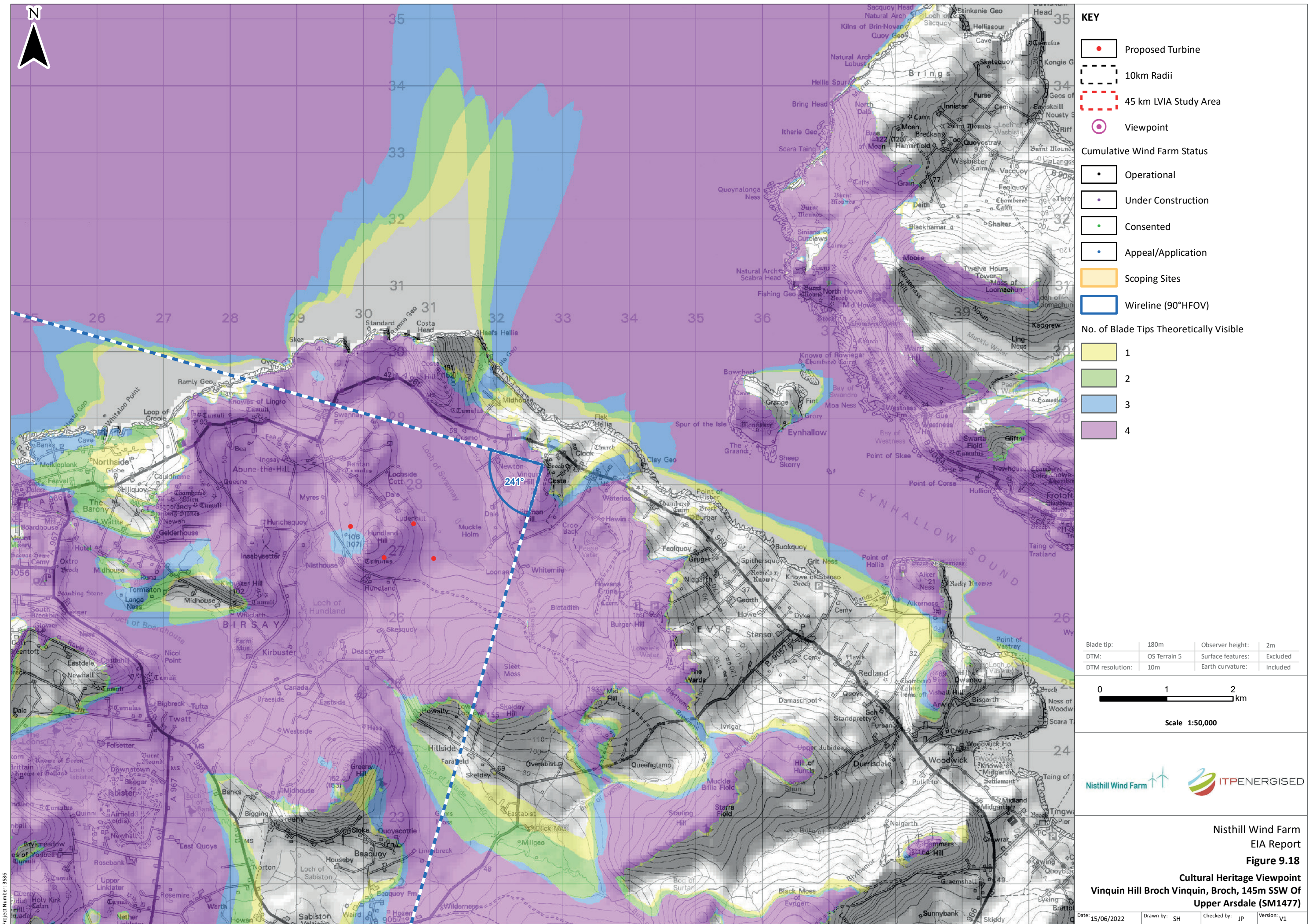


Scale: 1:350,000



KEY

- Proposed Turbine
- 10km Radii
- 45 km LVIA Study Area
- Viewpoint

Cumulative Wind Farm Status

- Operational
- Under Construction
- Consented
- Appeal/Application

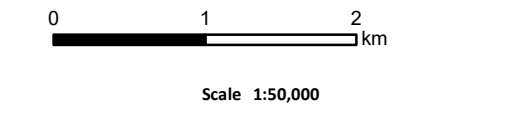
Scoping Sites

- Scoping Sites
- Wireline (90°HFOV)

No. of Blade Tips Theoretically Visible

- 1
- 2
- 3
- 4

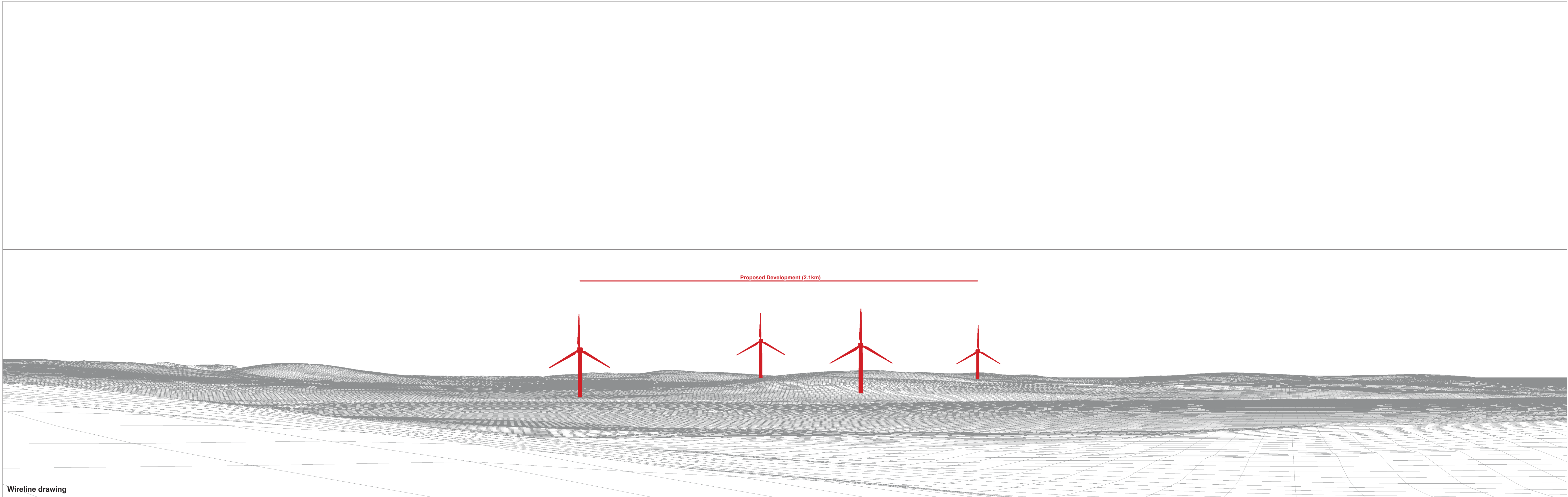
Blade tip:	180m	Observer height:	2m
DTM:	OS Terrain 5	Surface features:	Excluded
DTM resolution:	10m	Earth curvature:	Included



Nisthill Wind Farm
EIA Report
Figure 9.18
Cultural Heritage Viewpoint
Vinquin Hill Broch Vinquin, Broch, 145m SSW Of
Upper Arsdale (SM1477)

Date: 15/06/2022 Drawn by: SH Checked by: JP Version: v1

© Crown copyright and database rights 2022. Ordnance Survey 0100031673. Contains OS data © Crown copyright and database right (2022). Contains public sector information licensed under the Open Government Licence v3.0.



Wireline drawing

OS reference: 332697 E 1028299 N
Eye level: 99.55 m AOD
Direction of view: 241°
Nearest turbine: 2.134 km

Horizontal field of view: 90° (cylindrical projection)
Principal distance: 522 mm

Figure: 9.18
Site No. 114: Vinquin Hill Broch Vinquin, Broch,
145m SSW Of Upper Arsdale (List no. SM1477)