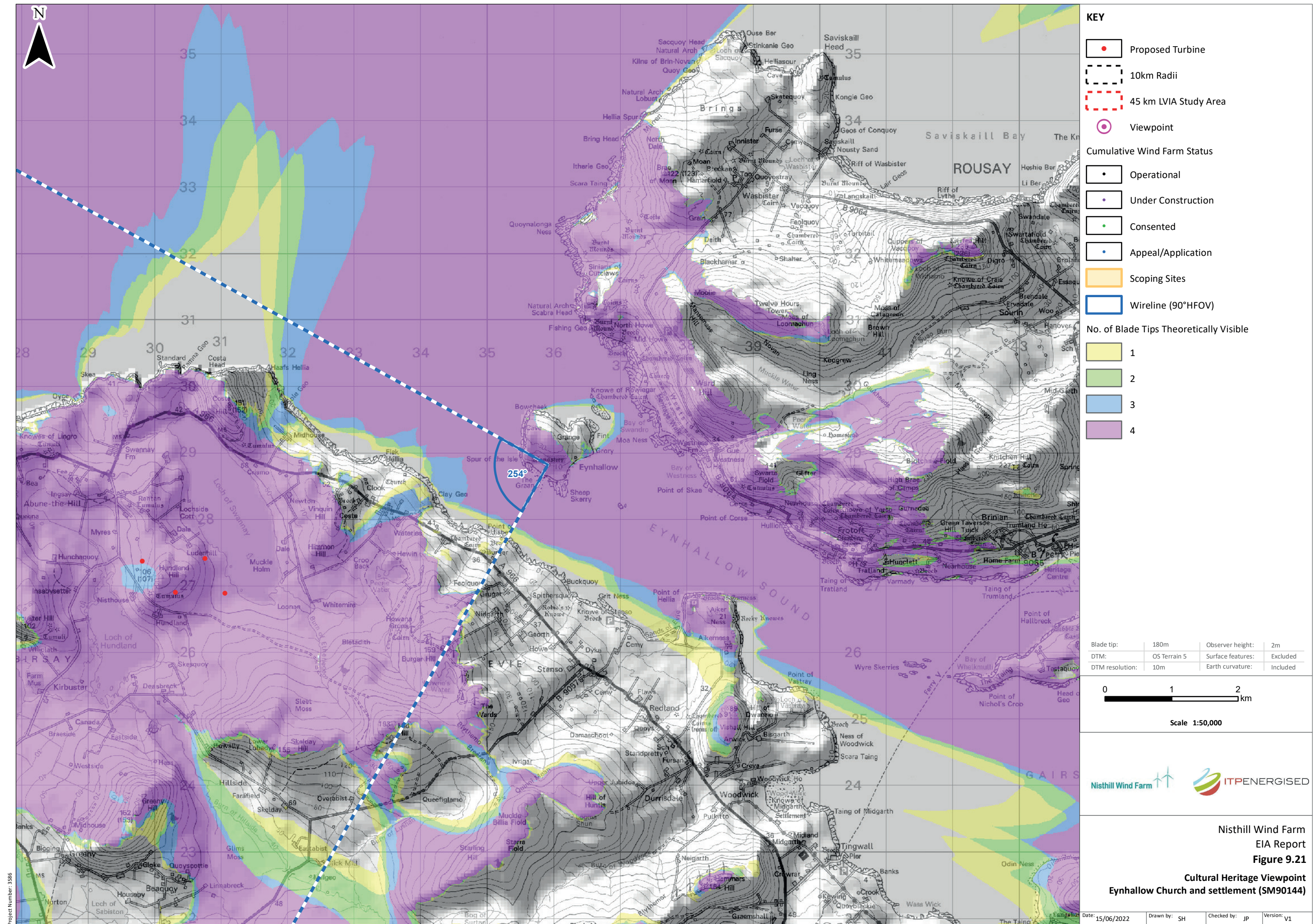


Scale: 1:350,000



KEY

- Proposed Turbine
- 10km Radii
- 45 km LVIA Study Area
- ⊙ Viewpoint

Cumulative Wind Farm Status

- Operational
- Under Construction
- Consented
- Appeal/Application

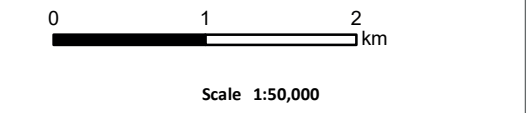
Scoping Sites

- Scoping Sites
- Wireline (90°HFOV)

No. of Blade Tips Theoretically Visible

- 1
- 2
- 3
- 4

| | | | |
|-----------------|--------------|-------------------|----------|
| Blade tip: | 180m | Observer height: | 2m |
| DTM: | OS Terrain 5 | Surface features: | Excluded |
| DTM resolution: | 10m | Earth curvature: | Included |

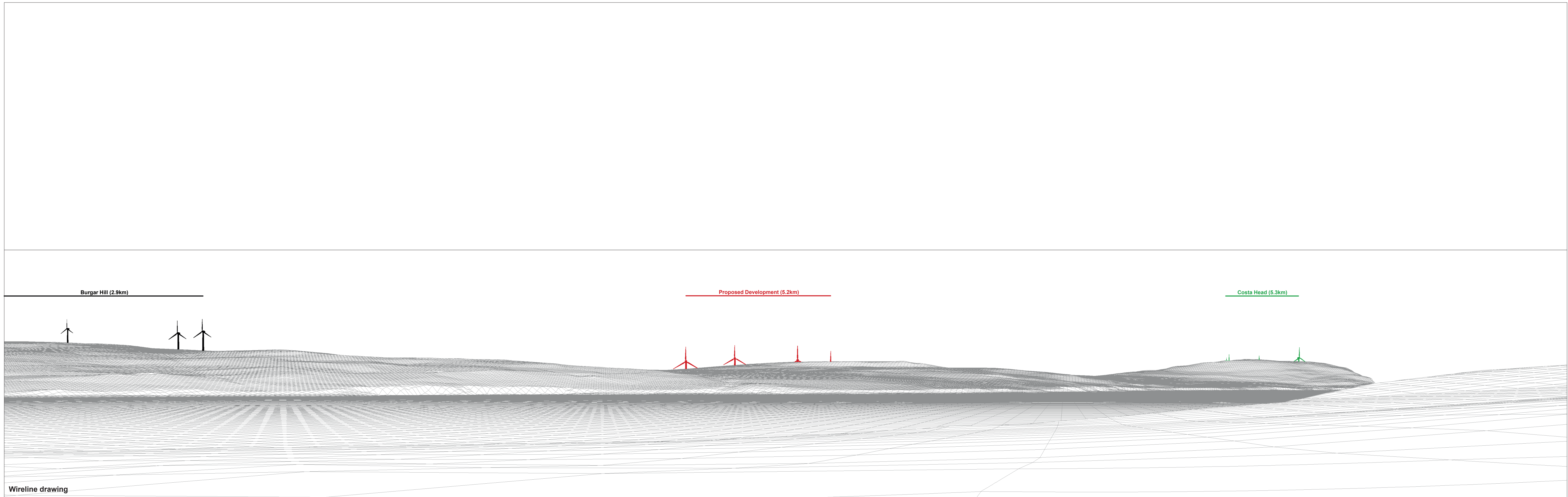


Nisthill Wind Farm
EIA Report
Figure 9.21
Cultural Heritage Viewpoint
Eynallow Church and settlement (SM90144)

| | | | | | | | |
|-------|------------|-----------|----|-------------|----|----------|----|
| Date: | 15/06/2022 | Drawn by: | SH | Checked by: | JP | Version: | V1 |
|-------|------------|-----------|----|-------------|----|----------|----|

Project Number: 1586

© Crown copyright and database rights 2022. Ordnance Survey 0100031673. Contains OS data © Crown copyright and database right (2022). Contains public sector information licensed under the Open Government Licence v3.0.



Wireline drawing

| | | | |
|--------------------|--------------------|---------------------------|------------------------------|
| OS reference: | 335912 E 1028821 N | Horizontal field of view: | 90° (cylindrical projection) |
| Eye level: | 12.97 m AOD | Principal distance: | 522 mm |
| Direction of view: | 254° | | |
| Nearest turbine: | 5.225 km | | |

Figure: 9.21
Site No.126: Eynhallow Church and settlement
(List No. SM90144)