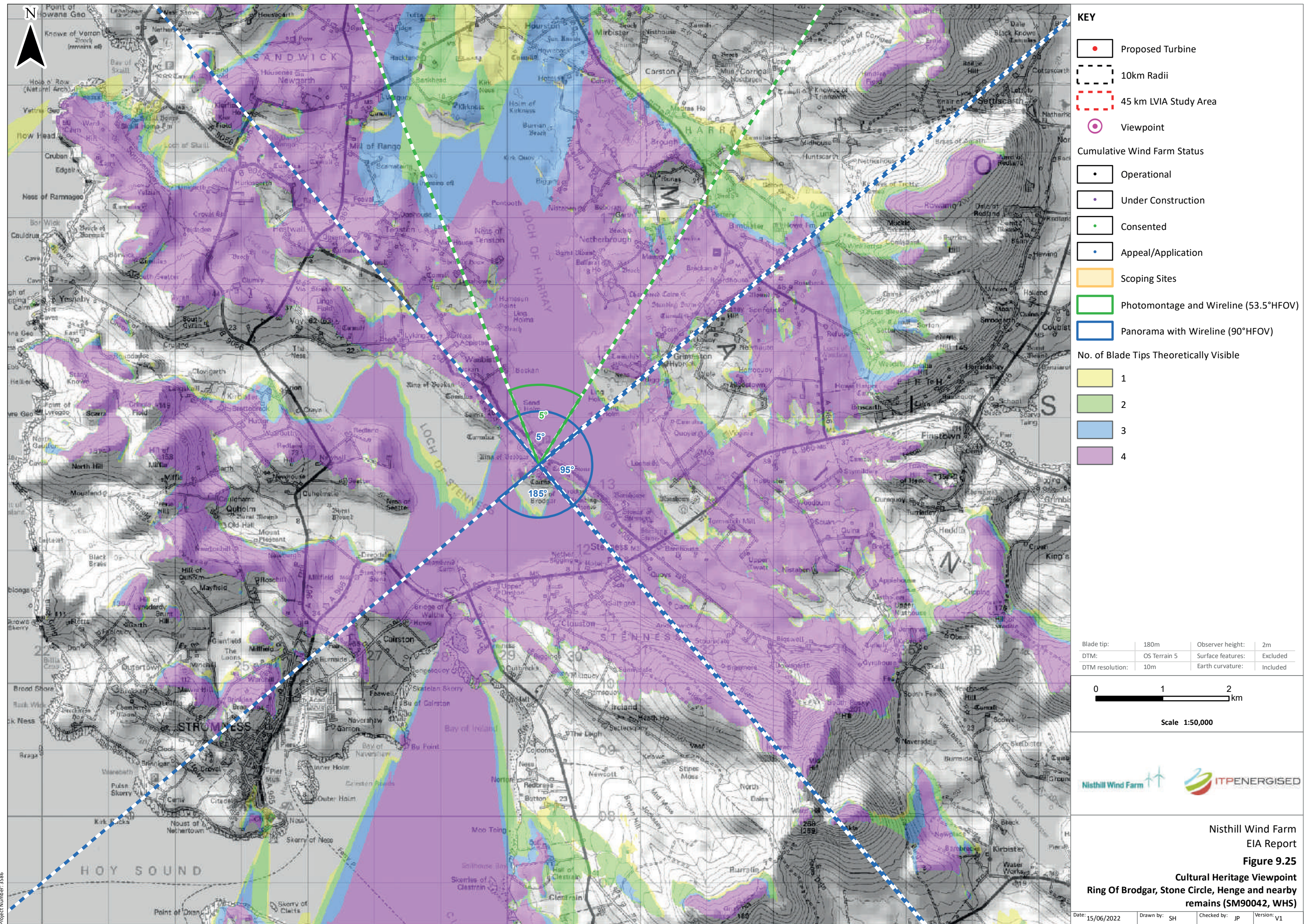


Scale: 1:350,000

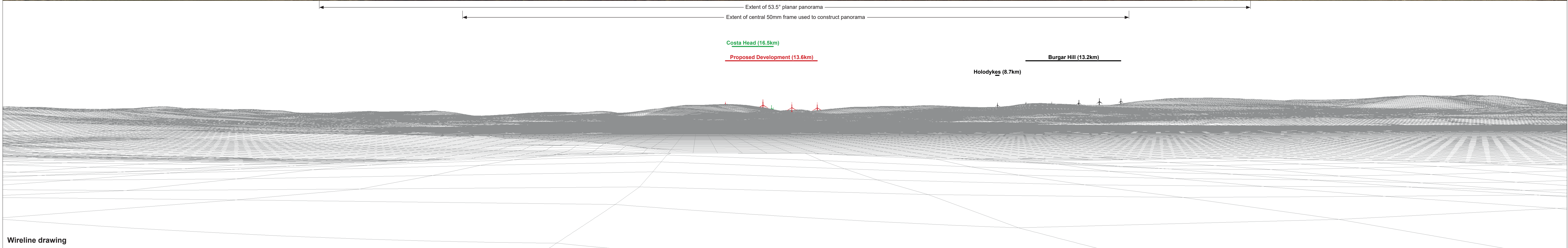


© Crown copyright and database rights 2022. Ordnance Survey 0100031673. Contains OS data © Crown copyright and database right (2022). Contains public sector information licensed under the Open Government Licence v3.0.



Baseline photograph

This image provides landscape and visual context only



Wireline drawing

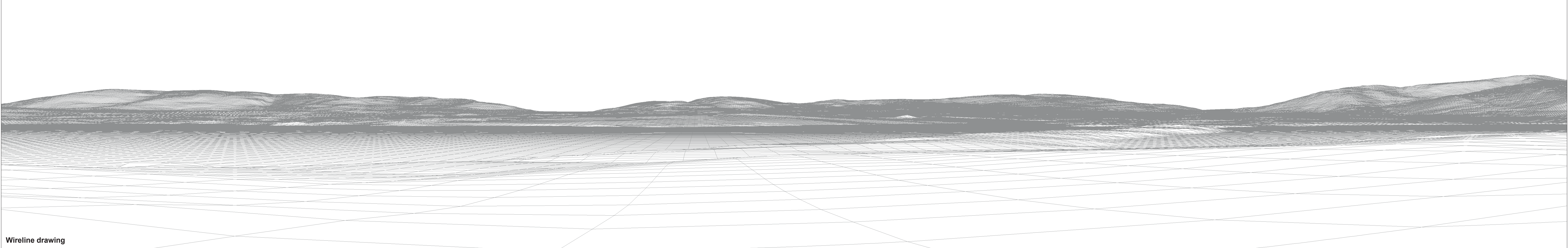
OS reference:	329422 E 1013286 N	Horizontal field of view:	90° (cylindrical projection)	Camera:	Canon EOS 6D Mark II
Eye level:	11.33 m AOD	Principal distance:	522 mm	Lens:	EF50mm f/1.4 USM
Direction of view:	5°	Camera height:	1.5 m AGL	Date and time:	01/03/2022, 14:52
Nearest turbine:	13.643 km				

Figure: 9.25
Site No.146: Ring Of Brodgar, Stone Circle, Henge and nearby remains (List No. SM90042, WHS)



Baseline photograph

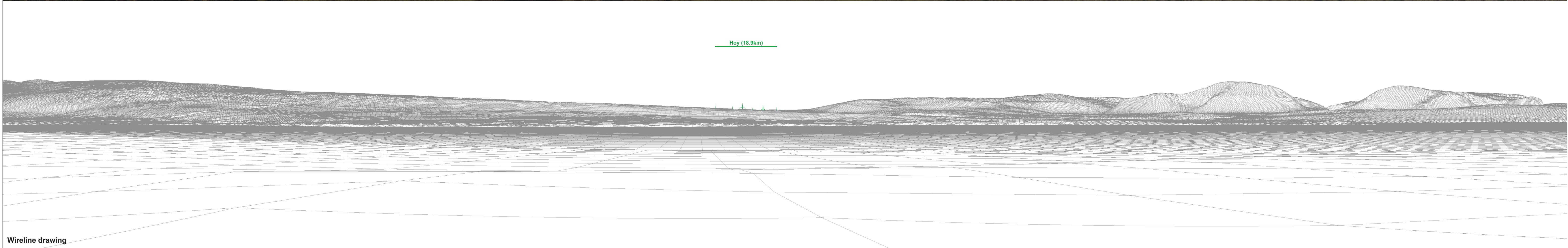
This image provides landscape and visual context only



Wireline drawing

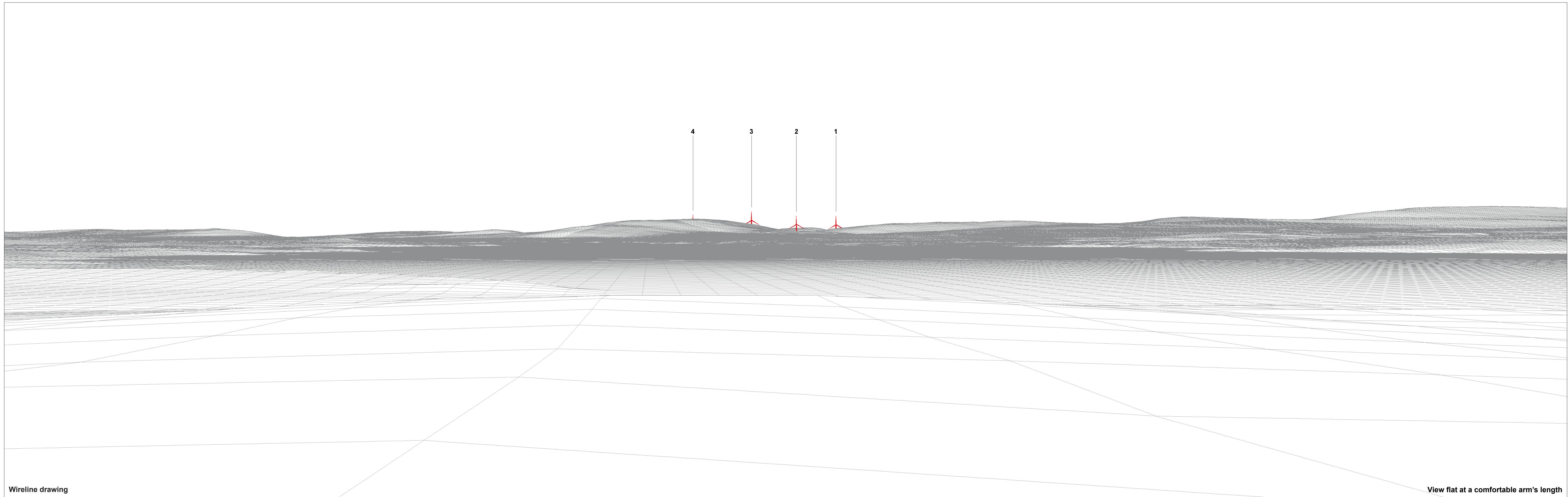
OS reference:	329422 E 1013286 N	Horizontal field of view:	90° (cylindrical projection)	Camera:	Canon EOS 6D Mark II
Eye level:	11.33 m AOD	Principal distance	522 mm	Lens:	EF50mm f/1.4 USM
Direction of view:	95°			Camera height:	1.5 m AGL
Nearest turbine:	13.643 km			Date and time:	01/03/2022, 14:52

Figure: 9.25
Site No.146: Ring Of Brodgar, Stone Circle,
Henge and nearby remains (List No. SM90042,
WHS)



OS reference:	329422 E 1013286 N	Horizontal field of view:	90° (cylindrical projection)	Camera:	Canon EOS 6D Mark II
Eye level:	13.66 m AOD	Principal distance	522 mm	Lens:	EF50mm f/1.4 USM
Direction of view:	185°			Camera height:	1.5 m AGL
Nearest turbine:	13.643 km			Date and time:	01/03/2022, 14:52

Figure: 9.25
Site No.146: Ring Of Brodgar, Stone Circle,
Henge and nearby remains (List No. SM90042,
WHS)



Wireline drawing

View flat at a comfortable arm's length

OS reference: 329422 E 1013286 N
Eye level: 11.33 m AOD
Direction of view: 5°
Nearest turbine: 13.643 km

Horizontal field of view: 53.5° (planar projection)
Principal distance: 812.5 mm
Paper size: 841 x 297 mm (half A1)
Correct printed image size: 820 x 260 mm

Camera: Canon EOS 6D Mark II
Lens: EF50mm f/1.4 USM
Camera height: 1.5 m AGL
Date and time: 01/03/2022, 14:52

Figure: 9.25
Site No.146: Ring Of Brodgar, Stone Circle, Henge and nearby remains (List No. SM90042, WHS)



Photomontage

View flat at a comfortable arm's length

OS reference: 329422 E 1013286 N
Eye level: 11.33 m AOD
Direction of view: 5°
Nearest turbine: 13.643 km

Horizontal field of view: 53.5° (planar projection)
Principal distance: 812.5 mm
Paper size: 841 x 297 mm (half A1)
Correct printed image size: 820 x 260 mm

Camera: Canon EOS 6D Mark II
Lens: EF50mm f/1.4 USM
Camera height: 1.5 m AGL
Date and time: 01/03/2022, 14:52

Figure: 9.25
Site No.146: Ring Of Brodgar, Stone Circle,
Henge and nearby remains (List No. SM90042,
WHS)