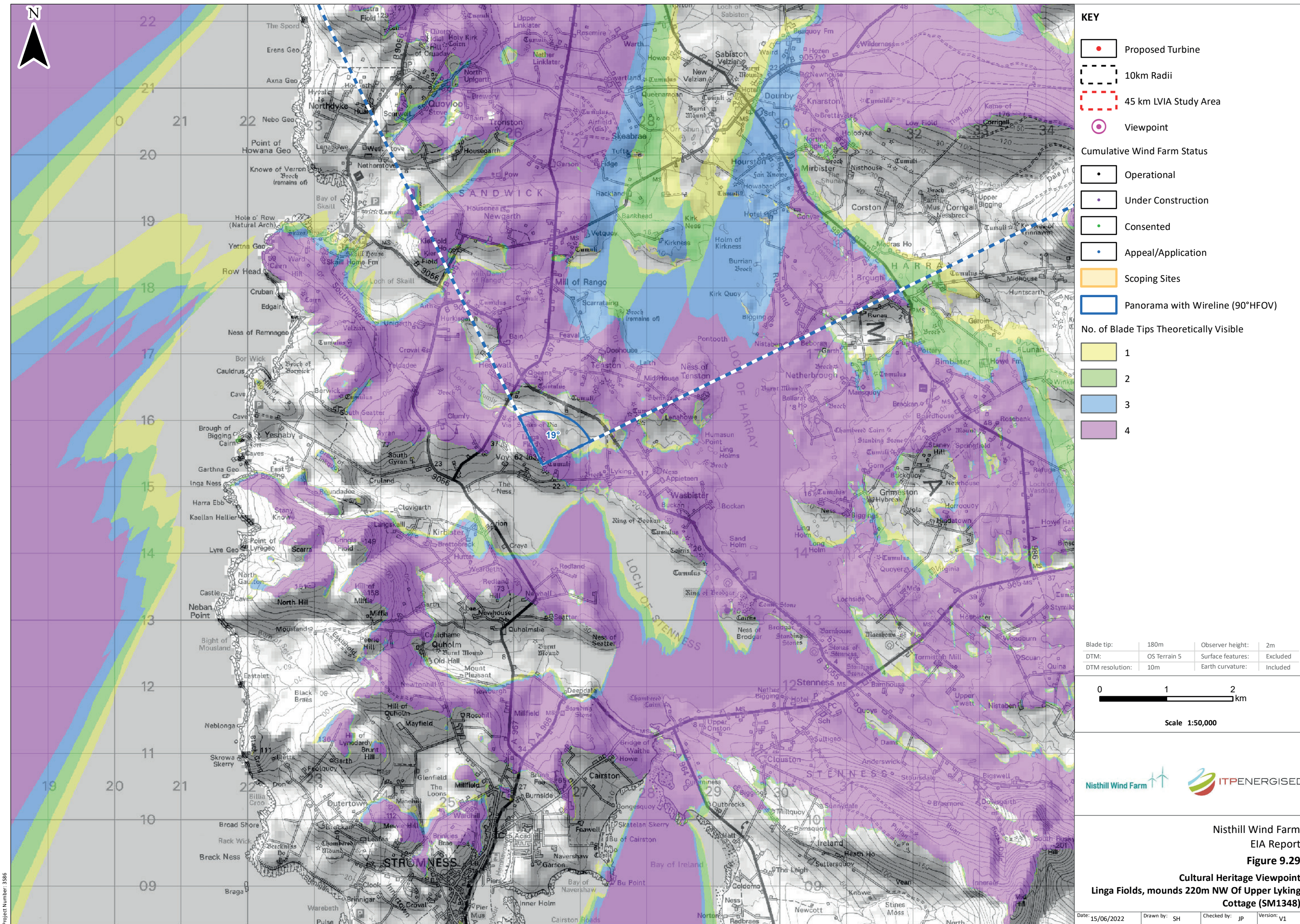
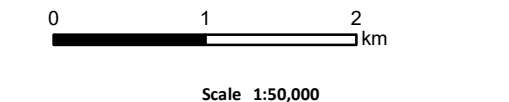


Scale: 1:350,000



- KEY**
- Proposed Turbine
 - 10km Radii
 - 45 km LVIA Study Area
 - Viewpoint
- Cumulative Wind Farm Status**
- Operational
 - Under Construction
 - Consented
 - Appeal/Application
- Scoping Sites**
- Scoping Sites
 - Panorama with Wireline (90°HFOV)
- No. of Blade Tips Theoretically Visible**
- 1
 - 2
 - 3
 - 4

Blade tip:	180m	Observer height:	2m
DTM:	OS Terrain 5	Surface features:	Excluded
DTM resolution:	10m	Earth curvature:	Included

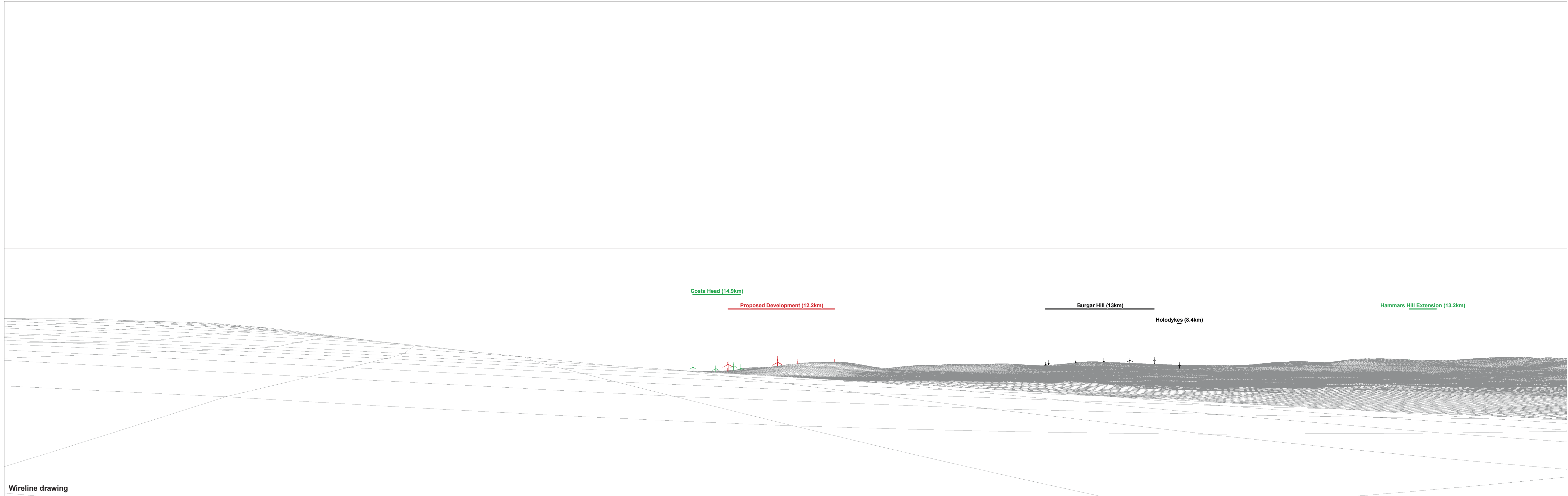


Nisthill Wind Farm
EIA Report
Figure 9.29
Cultural Heritage Viewpoint
Linga Fields, mounds 220m NW Of Upper Lyking
Cottage (SM1348)

Date: 15/06/2022 Drawn by: SH Checked by: JP Version: V1

Project Number: 1386

© Crown copyright and database rights 2022. Ordnance Survey 0100031673. Contains OS data © Crown copyright and database right (2022). Contains public sector information licensed under the Open Government Licence v3.0.



Wireline drawing

OS reference: 326434 E 1015333 N
 Eye level: 45.4 m AOD
 Direction of view: 19°
 Nearest turbine: 12.199 km

Horizontal field of view: 90° (cylindrical projection)
 Principal distance: 522 mm

Figure: 29
 Site No. : Linga Fields, mounds 220m NW Of
 Upper Lyking Cottage (List No. SM1348)